



سكاي كورٲس
SKYCOURTS

ABOUTSKYCOURTS

- A quality and affordable freehold residential community in the heart of Dubailand Residence Complex, opposite Academic City and the ever-growing Dubai Silicon Oasis, Falcon City and Queue Point.
- The strategically located Skycourts will be easily accessible from key arterial roads including the Al Ain Road, Dubai Bypass Road, and Emirates Road.
- The AED 1.6 billion Skycourts development, scheduled for delivery in the second half of 2010, offers over 2,800 apartments across six towers.

ABOUTSKYCOURTS

- A total of 2,632 units were sold out within six days for customers of National Bonds.
- Skycourts residents will also have access to world-class recreational and leisure amenities including health clubs and swimming pools, rooftop gardens and cafes, shops and free parking.
- National Bonds is the National Saving Scheme of the UAE launched by the National Bonds Corporation PJSC, a Dubai-based private joint stock shareholding company that was established in March 2006. The Government of Dubai holds a 50 per cent ownership in the company with each of its local shareholders, comprising Dubai Bank, Dubai Holding and Emaar Properties, holding 16.6 per cent ownership respectively. As an investment company National Bonds Corporation PJSC is licensed and regulated by the UAE Central Bank.

ABOUT SKYCOURTS



LOCATIONMAP

- In Dubailand Residence Complex next to "The Villa", Academic City, Dubai Silicon Oasis, Queue Point and Falcon City.
- Direct access from Al-Ain Road, Dubai Bypass Road and Emirates Road.
- Around 7 minutes from Emirates Road , 15 minutes from Trade Center and 20 minutes from Dubai International Airport.



CUSTOMERS DEMOGRAPHIC

Breakdown by Nationality	Units	%
UAE	829	31.50%
Indian	583	22.15%
Pakistan	193	7.33%
Iran	87	3.31%
British	77	2.93%
Jordanian	76	2.89%
Egypt	54	2.05%
Africa	46	1.75%
Europe	44	1.67%
North America	40	1.52%
Gulf Countries	35	1.33%
Syrian	31	1.18%
Asia	23	0.87%
Lebanon	21	0.80%
Palestinian	10	0.38%
Other	11	0.42%
Corporate Customers	472	17.93%
Total	2,632	100.00%



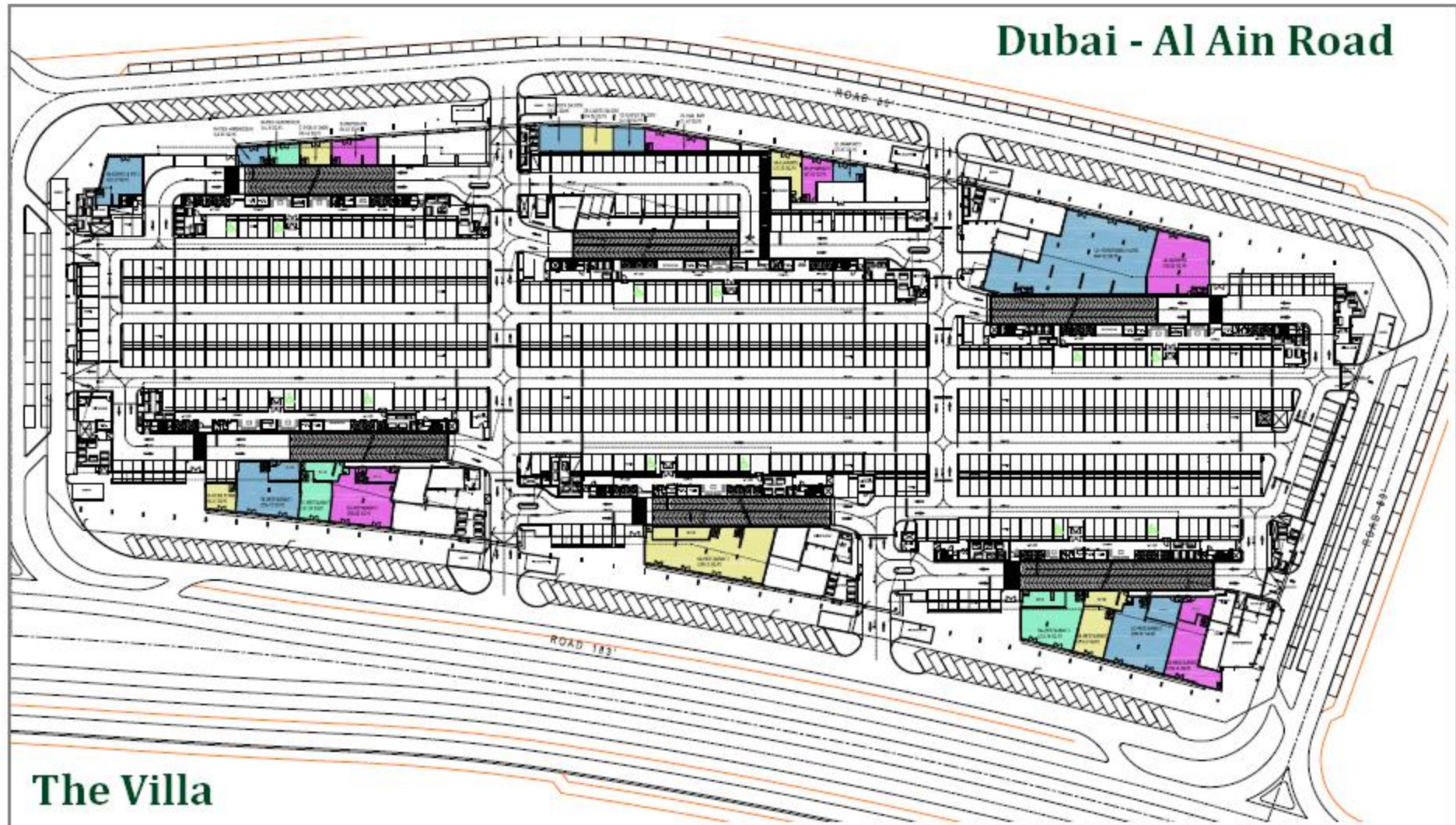
POPULATION IN THE AREA

According to the latest statistics from the official 'Dubai Statistics Center' the estimated population in that area is around 11,000 households.

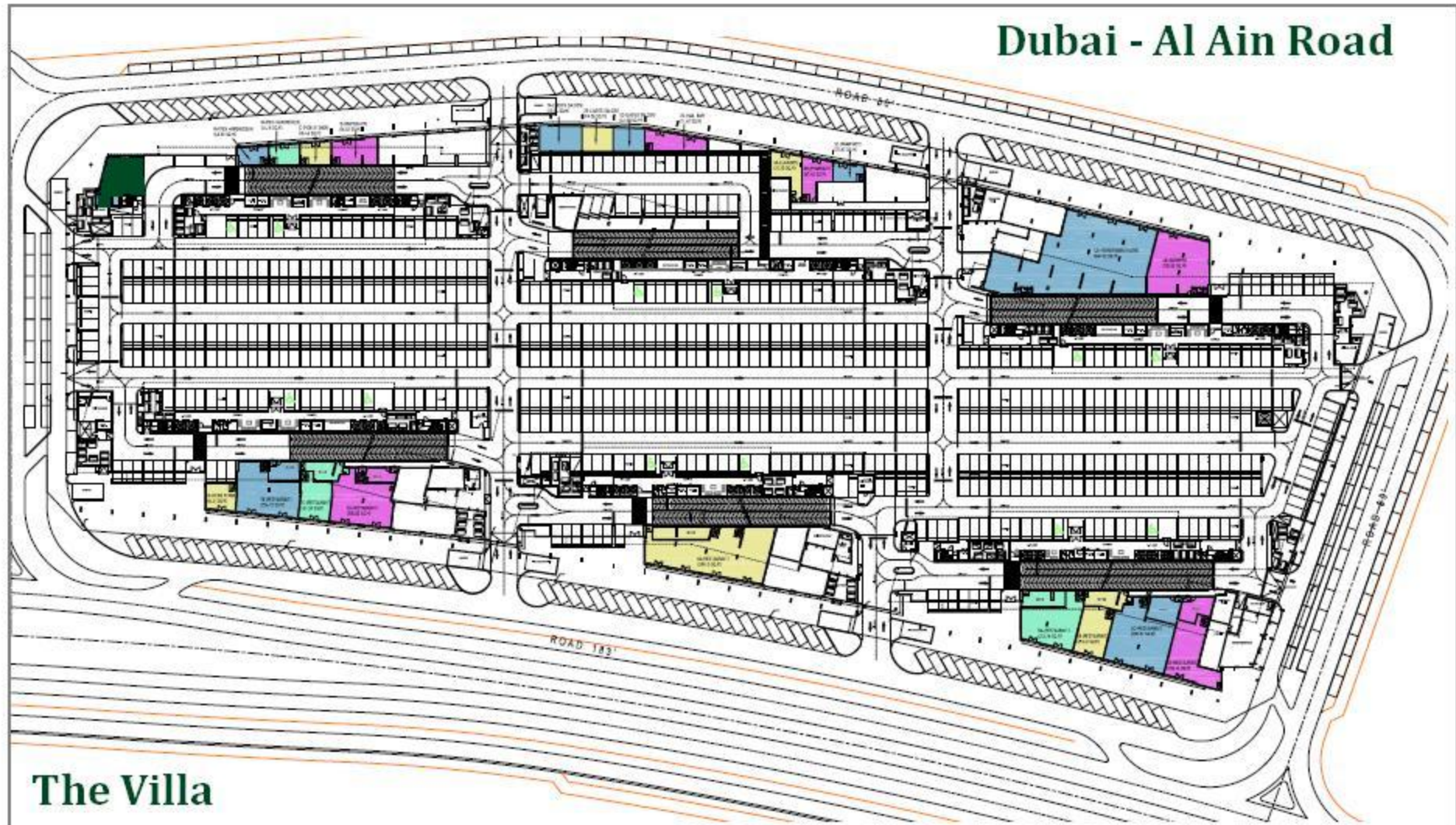
The Villa Project	1,800 Households
Queue Point	6,000 Households
Falcon City	350 Households
Skycourts	2,800 Households

Moreover with many universities and schools such as Zayed University, Al Ghurair Univeristy, Dubai Men's College, etc... across the road from Skycourts, the target population swells to over 40,000 individuals (including the residents of Skycourts).

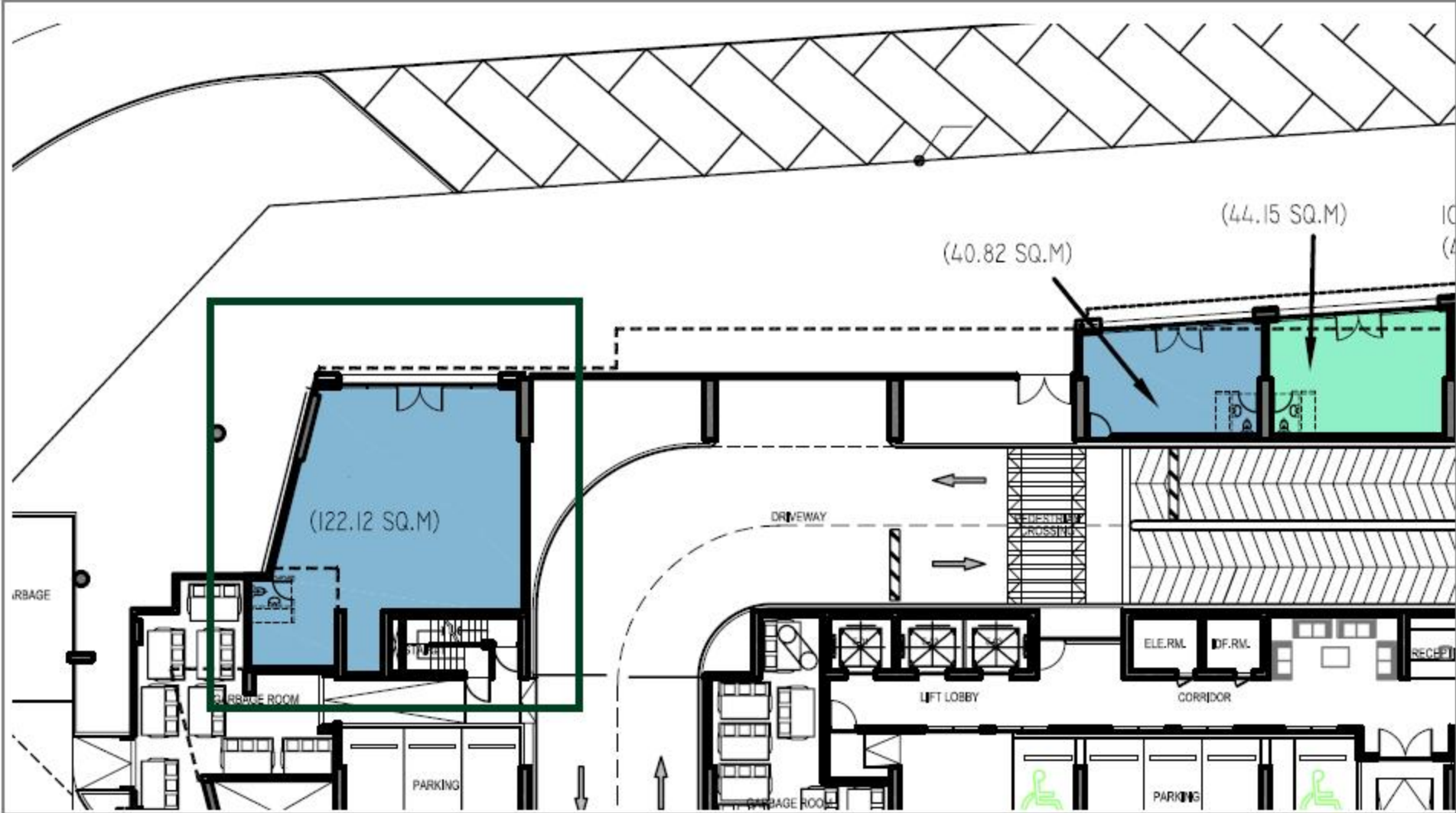
FLOORPLAN



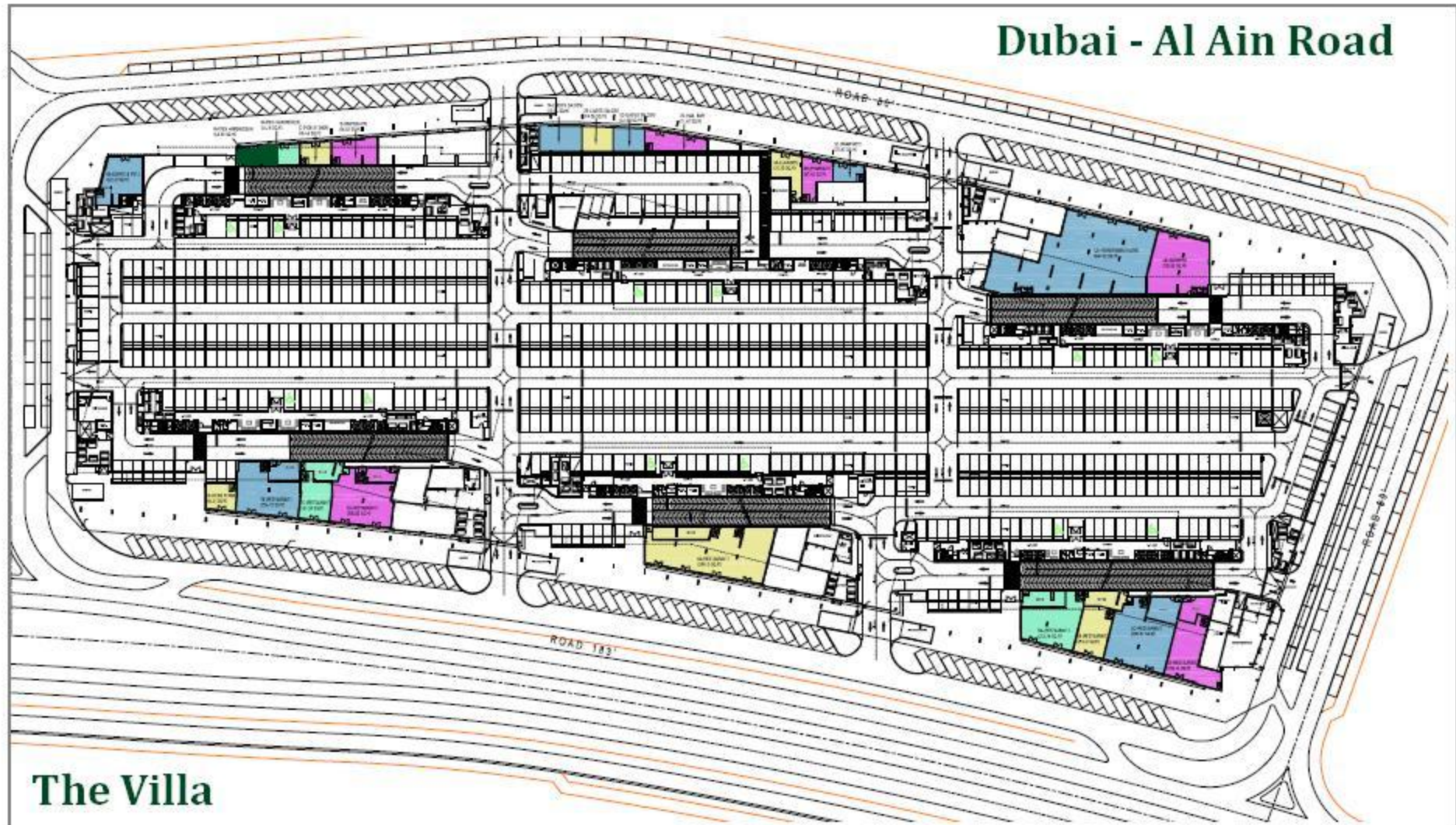
FLOORPLAN



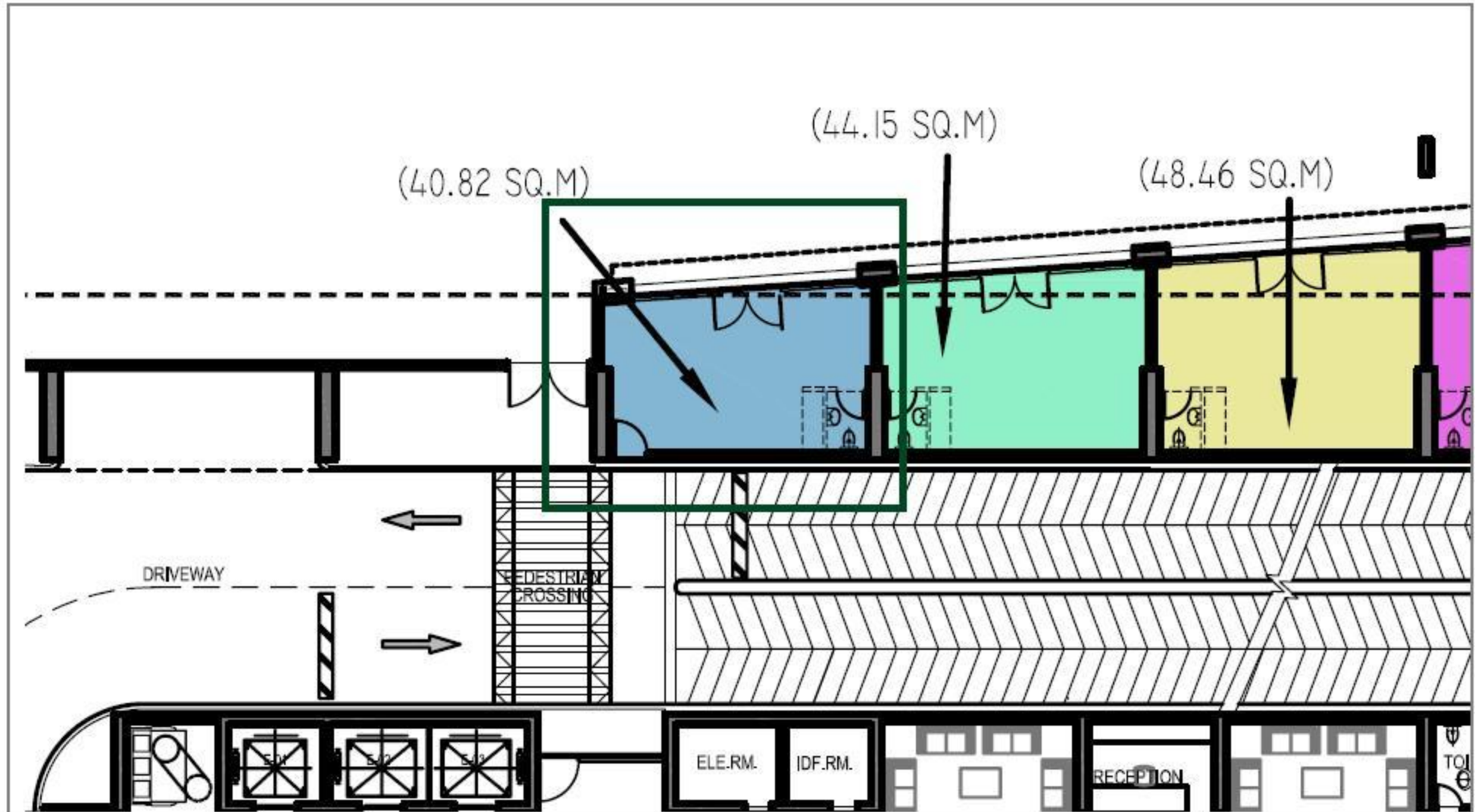
FLOORPLAN, SUGGESTED AREAS



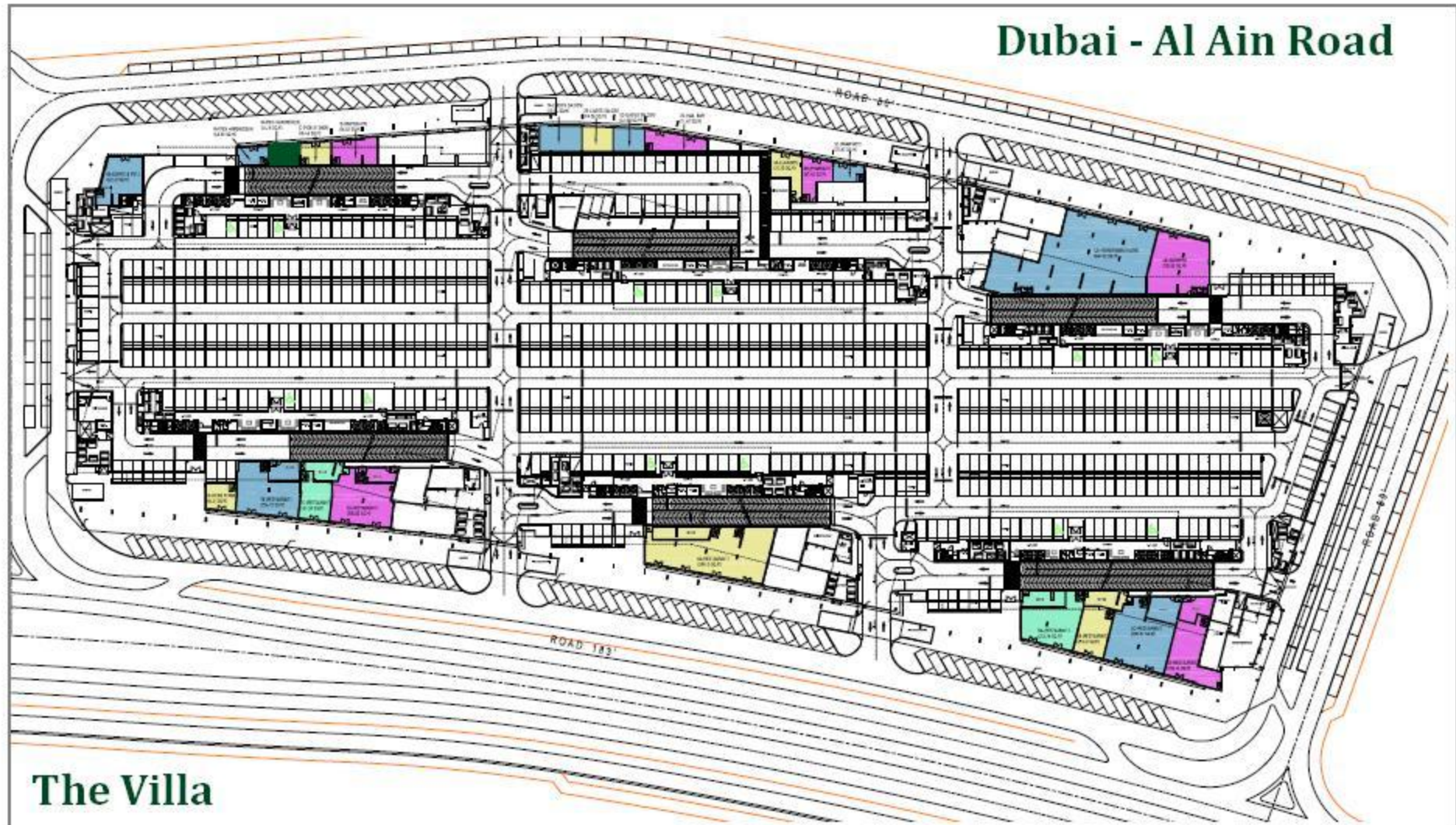
FLOORPLAN



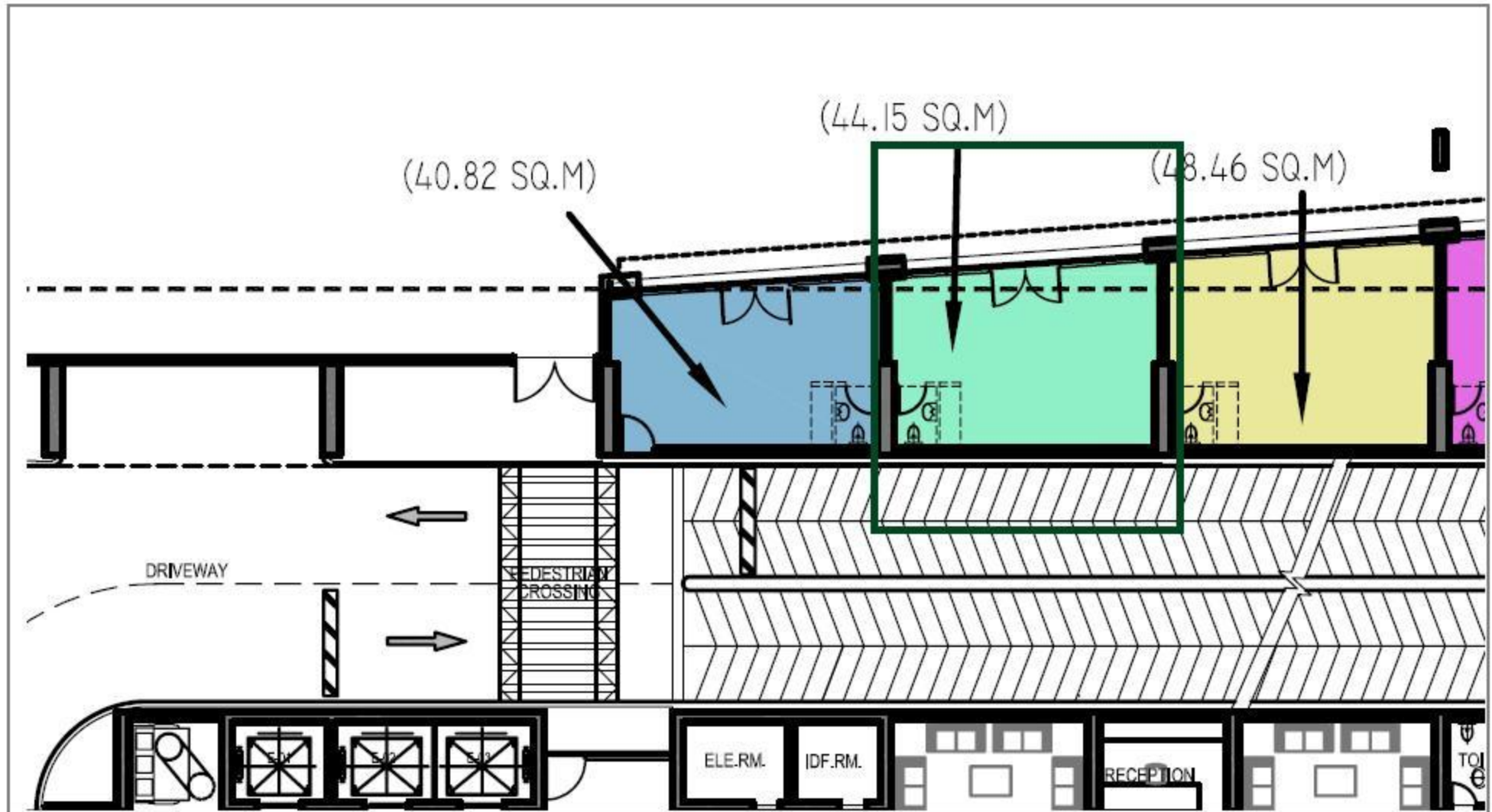
FLOORPLAN, SUGGESTED AREAS



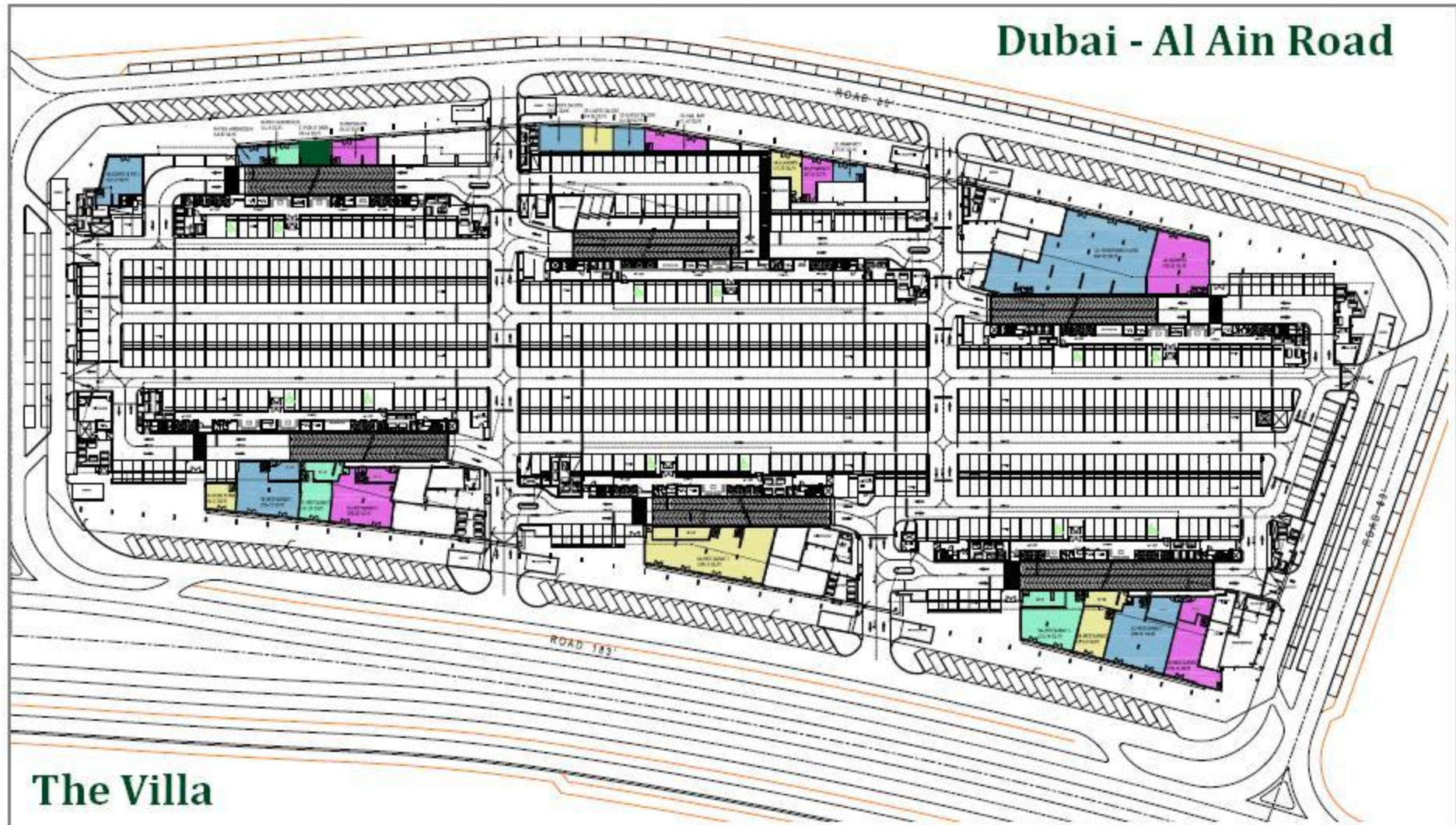
FLOORPLAN



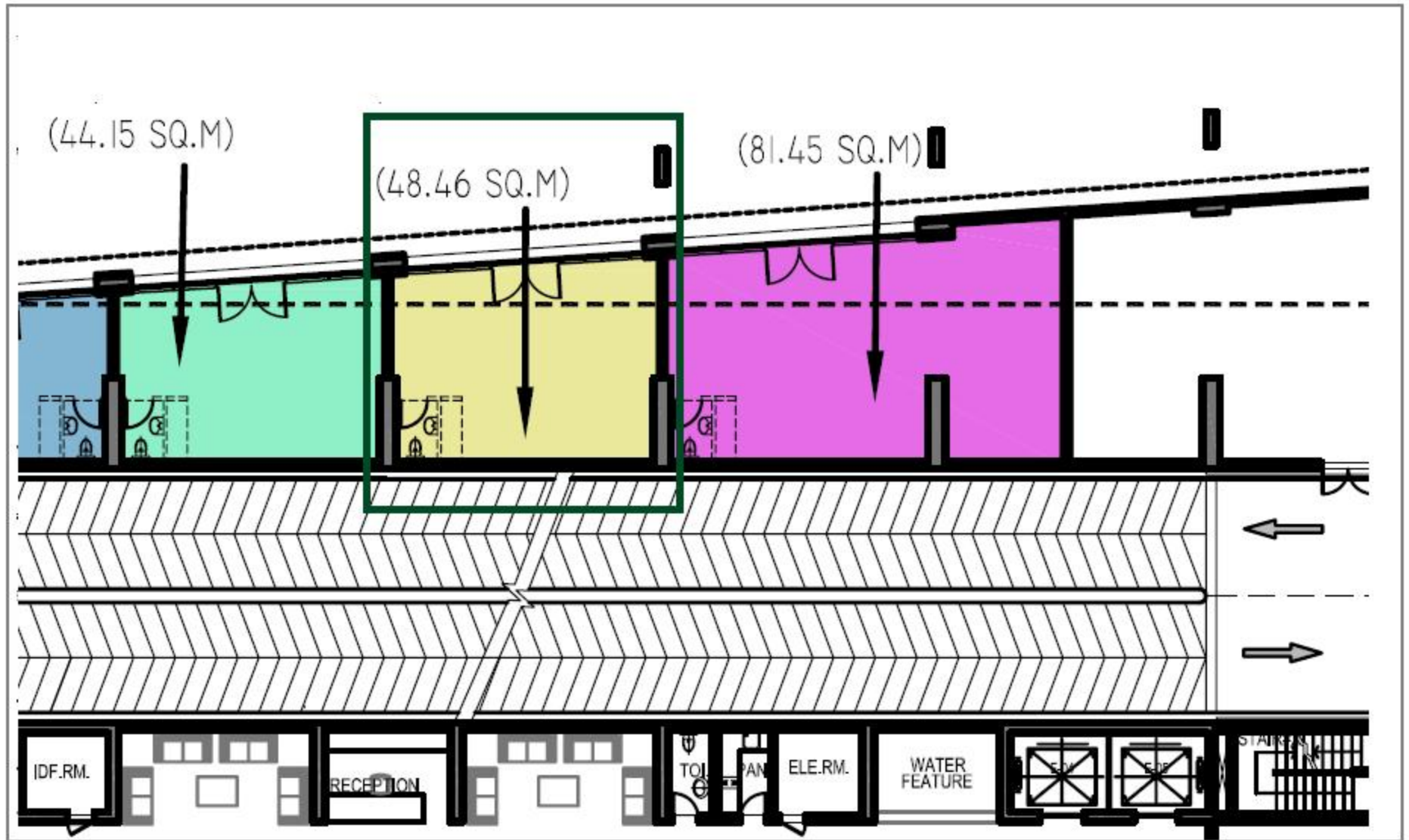
FLOORPLAN, SUGGESTED AREAS



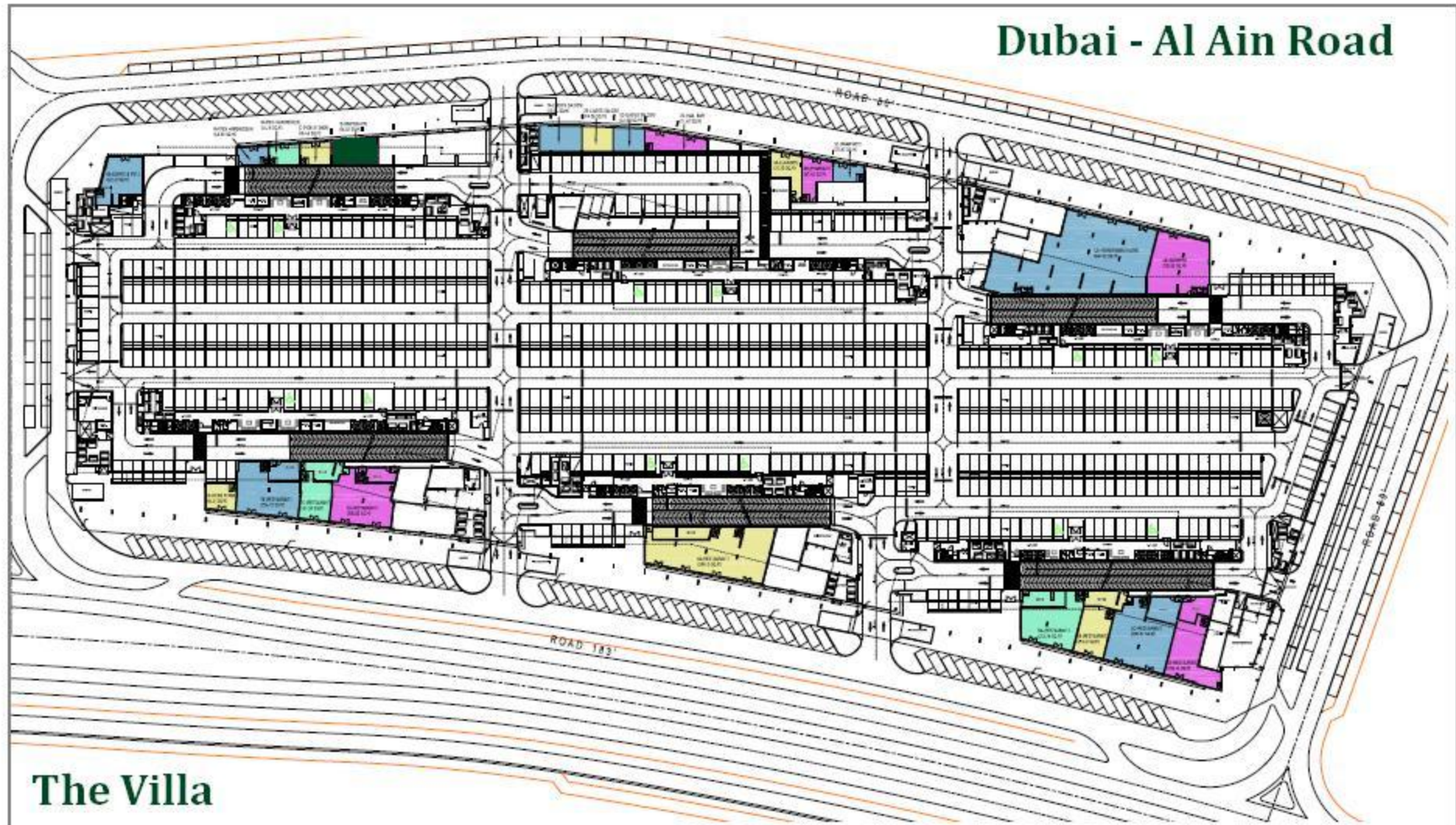
FLOORPLAN



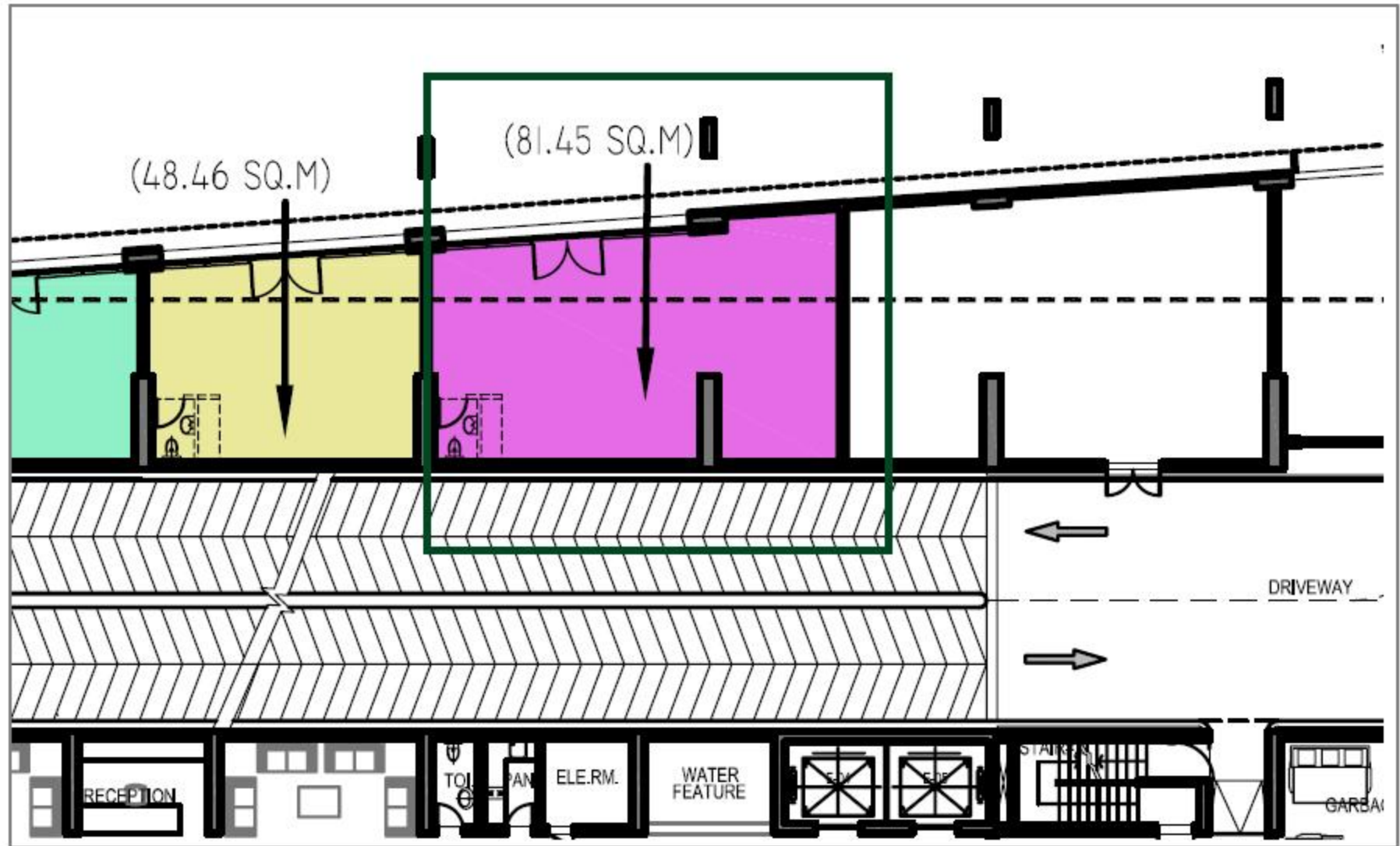
FLOORPLAN, SUGGESTED AREAS



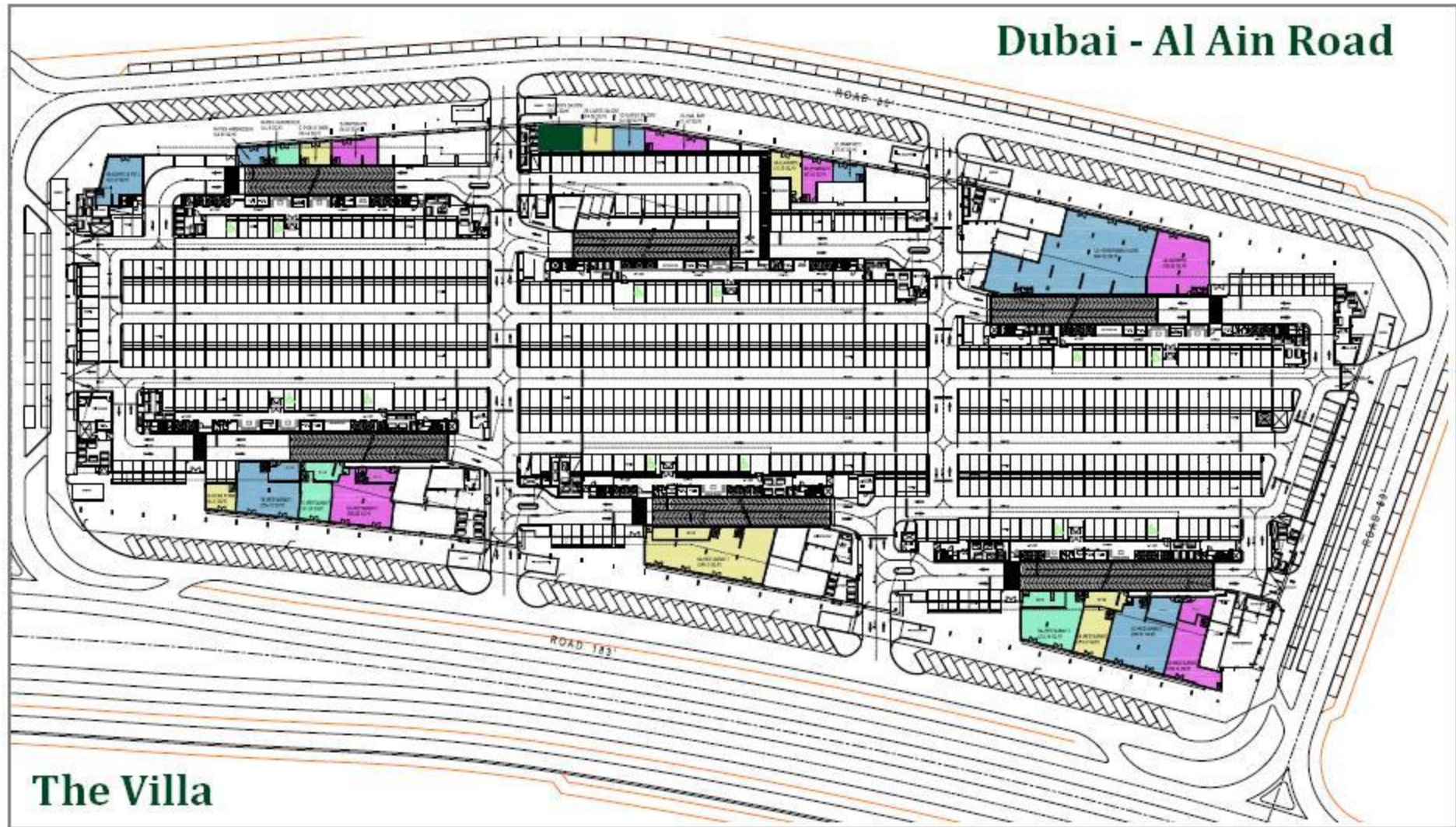
FLOORPLAN



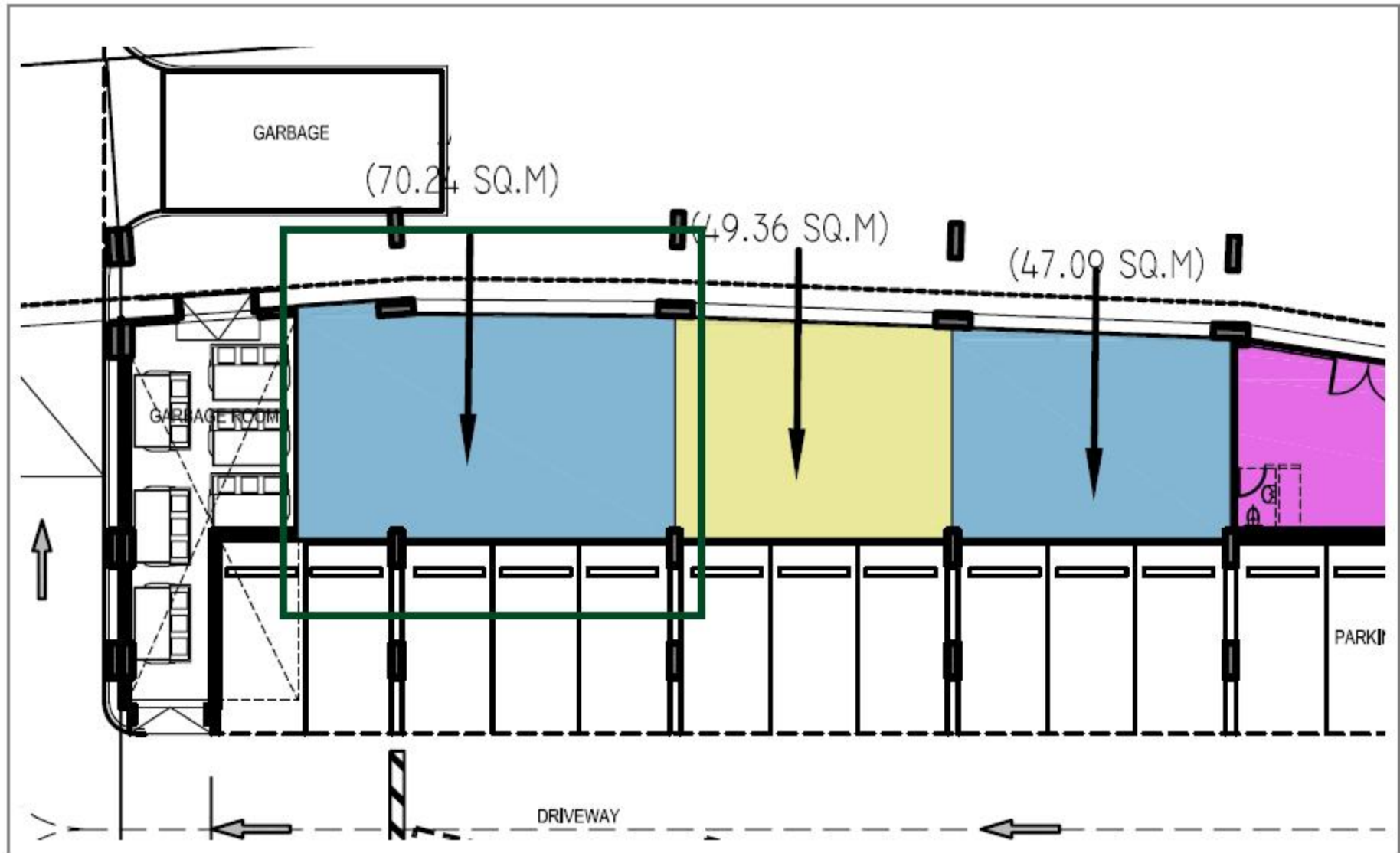
FLOORPLAN, SUGGESTED AREAS



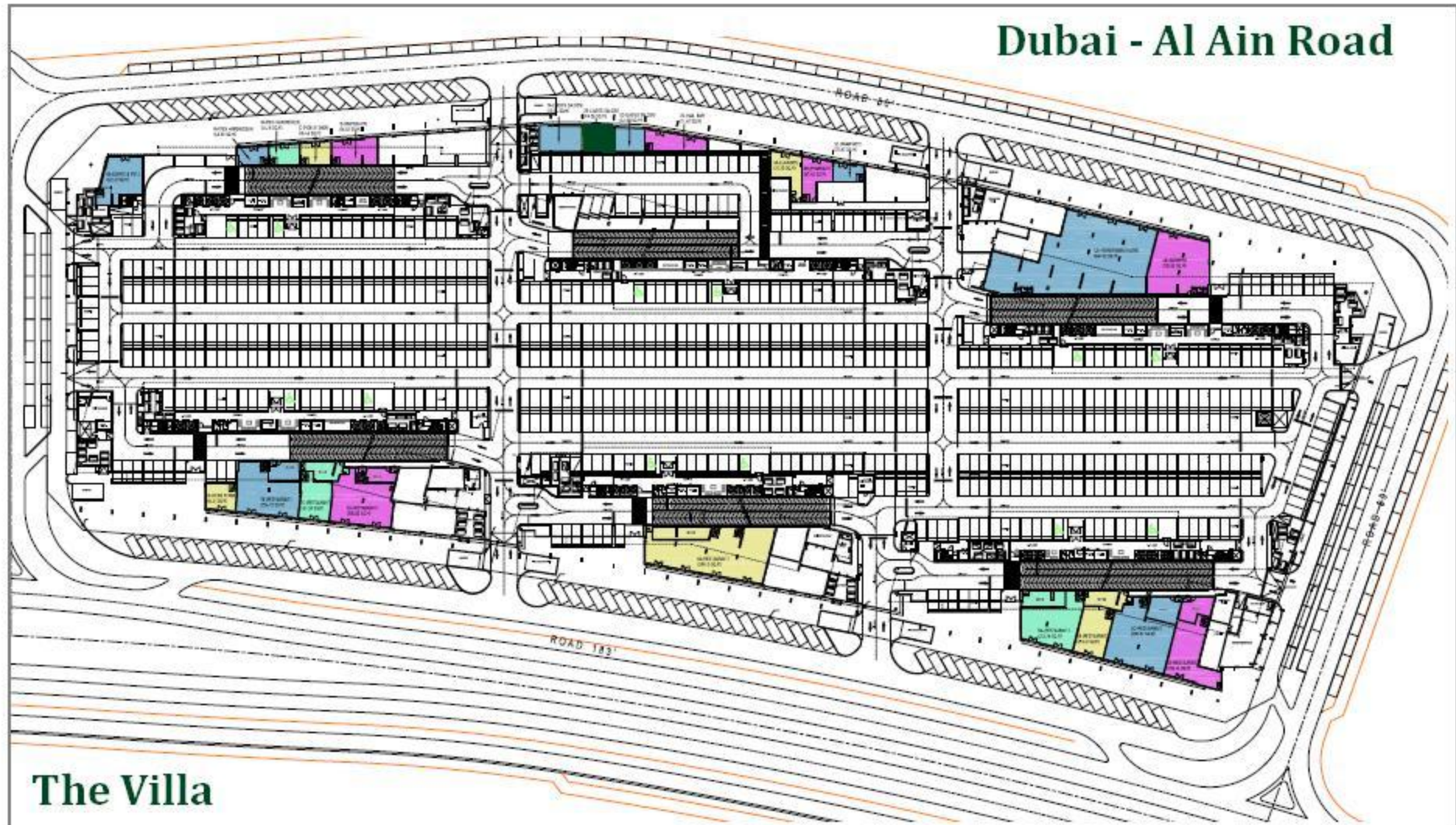
FLOORPLAN



FLOORPLAN, SUGGESTED AREAS



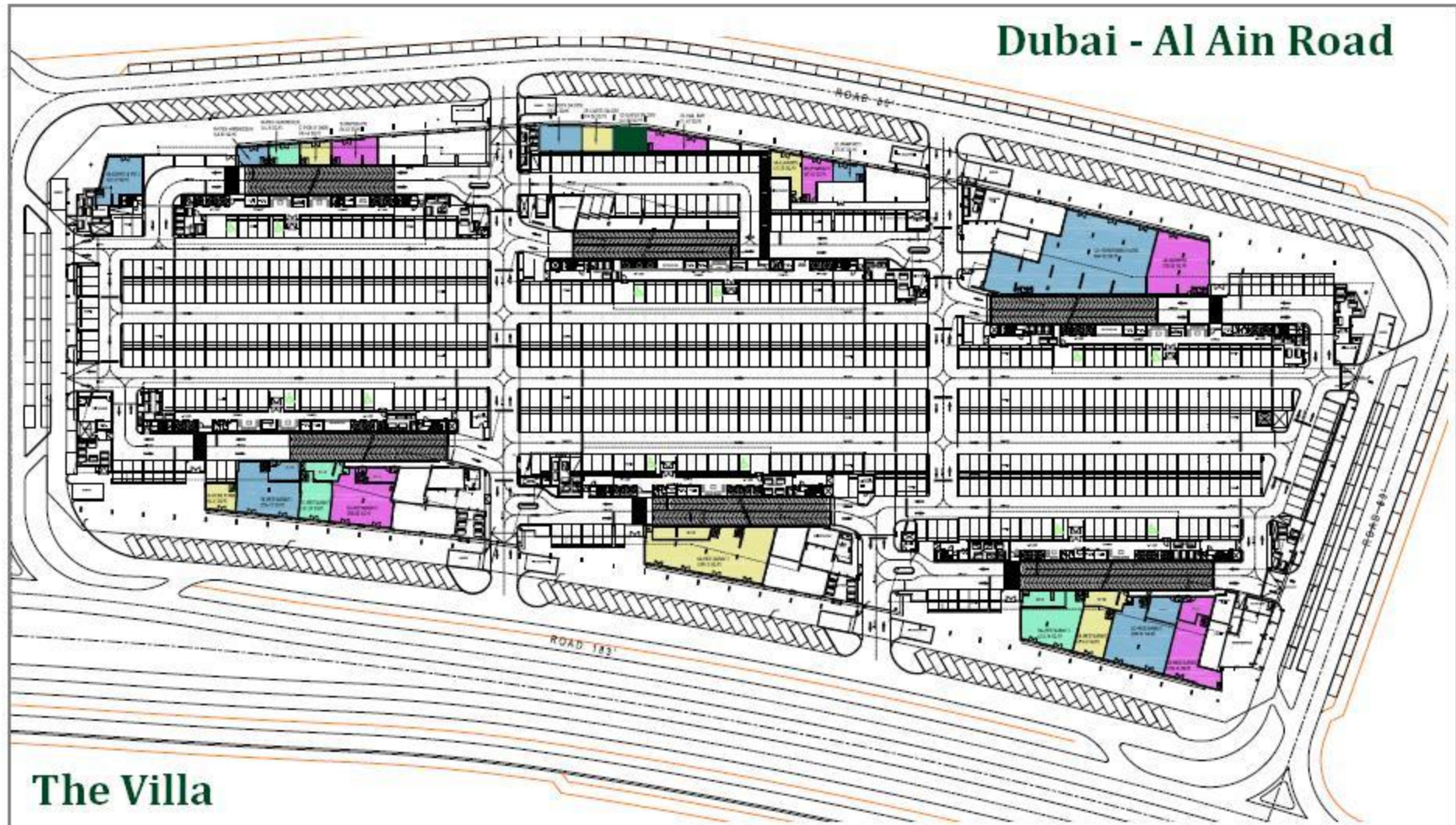
FLOORPLAN



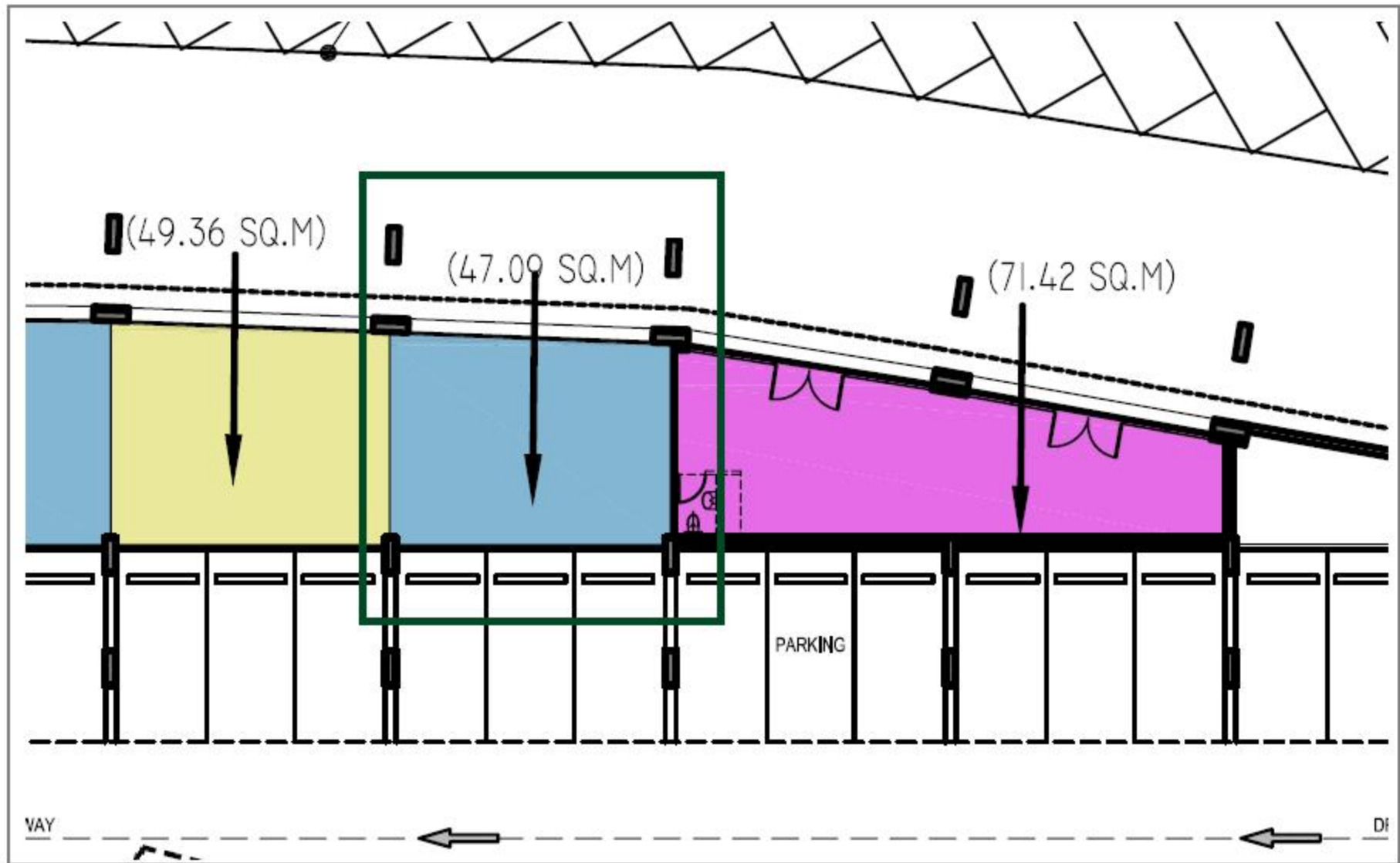
FLOORPLAN, SUGGESTED AREAS



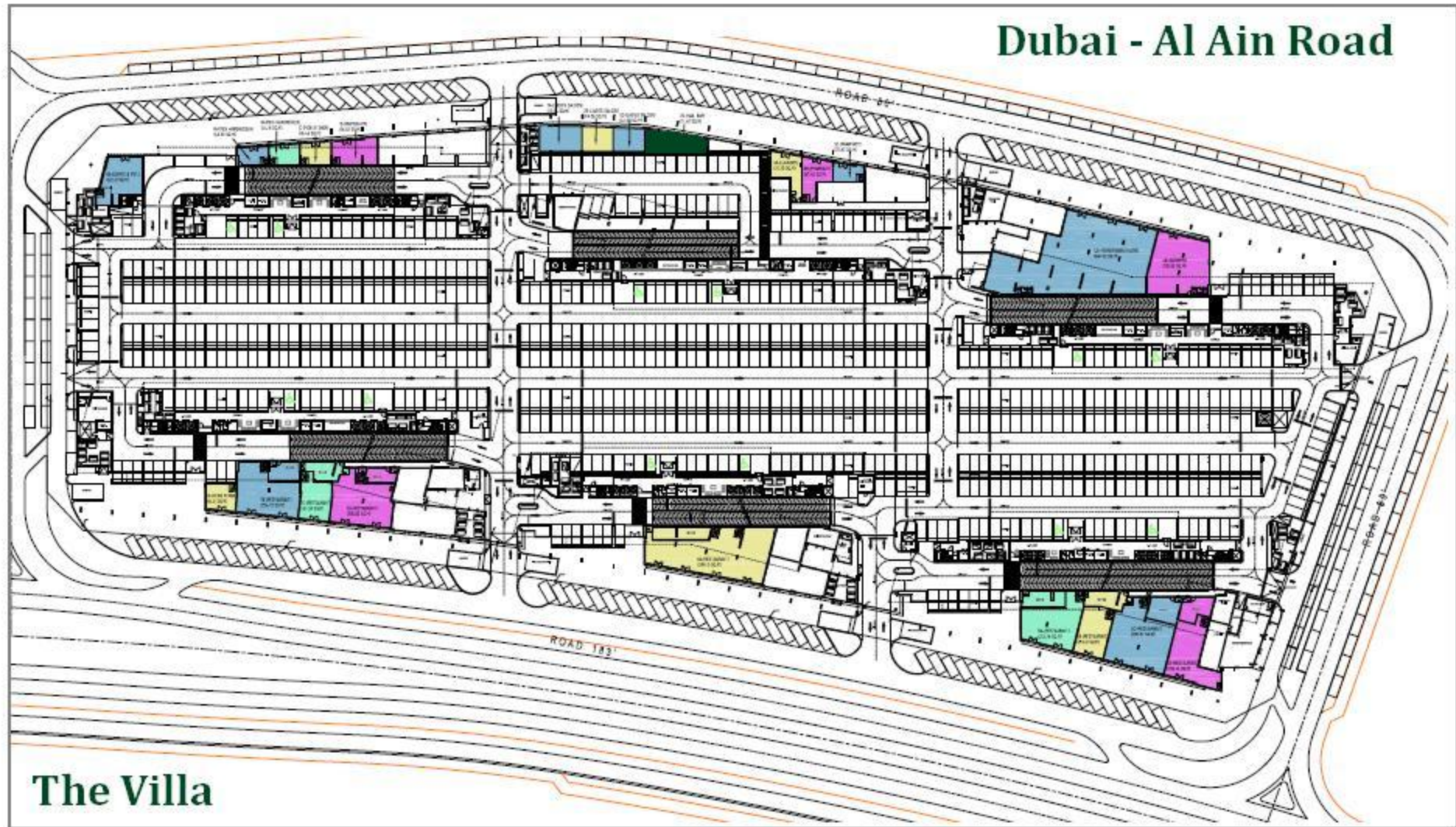
FLOORPLAN



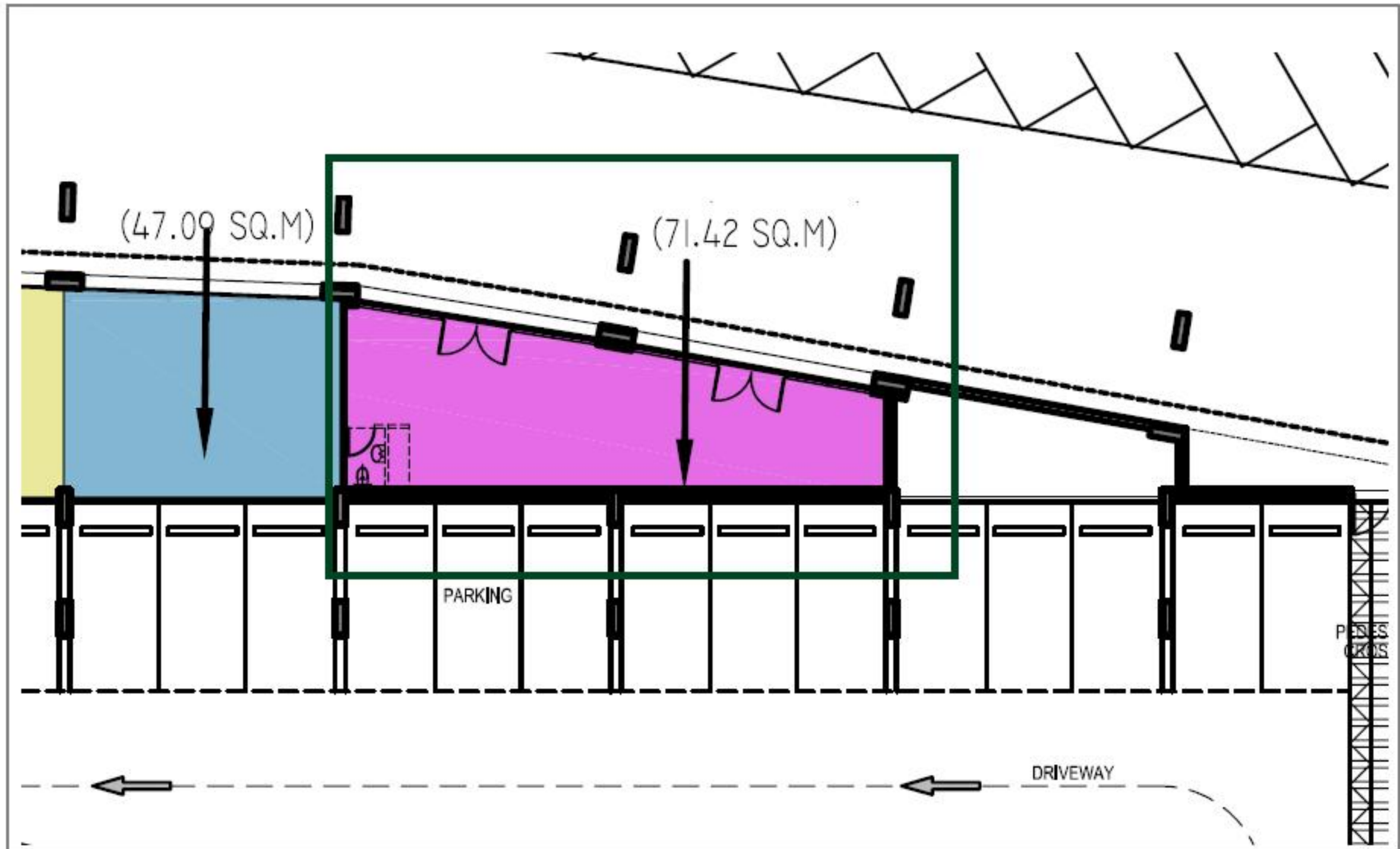
FLOORPLAN, SUGGESTED AREAS



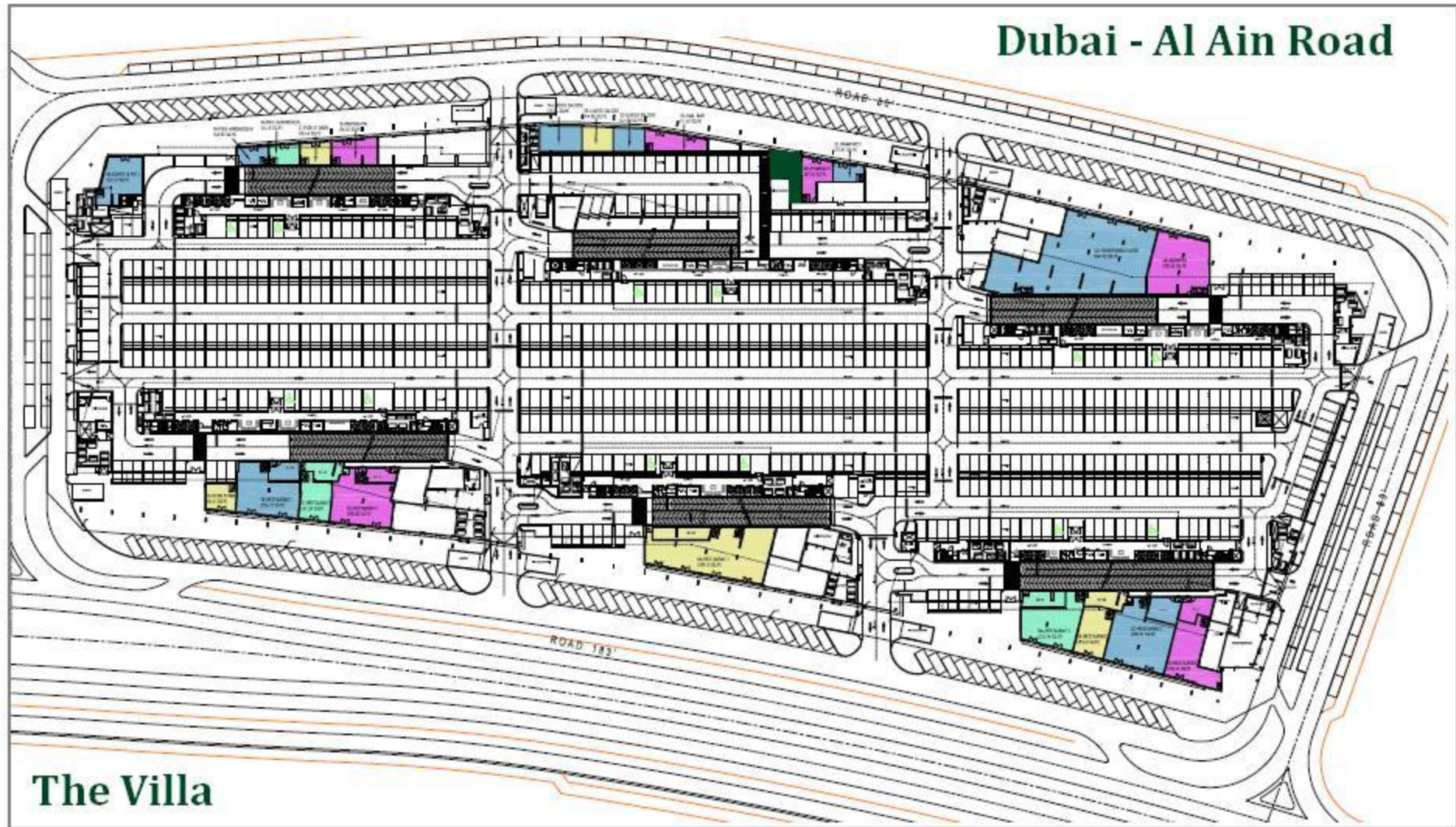
FLOORPLAN



FLOORPLAN, SUGGESTED AREAS



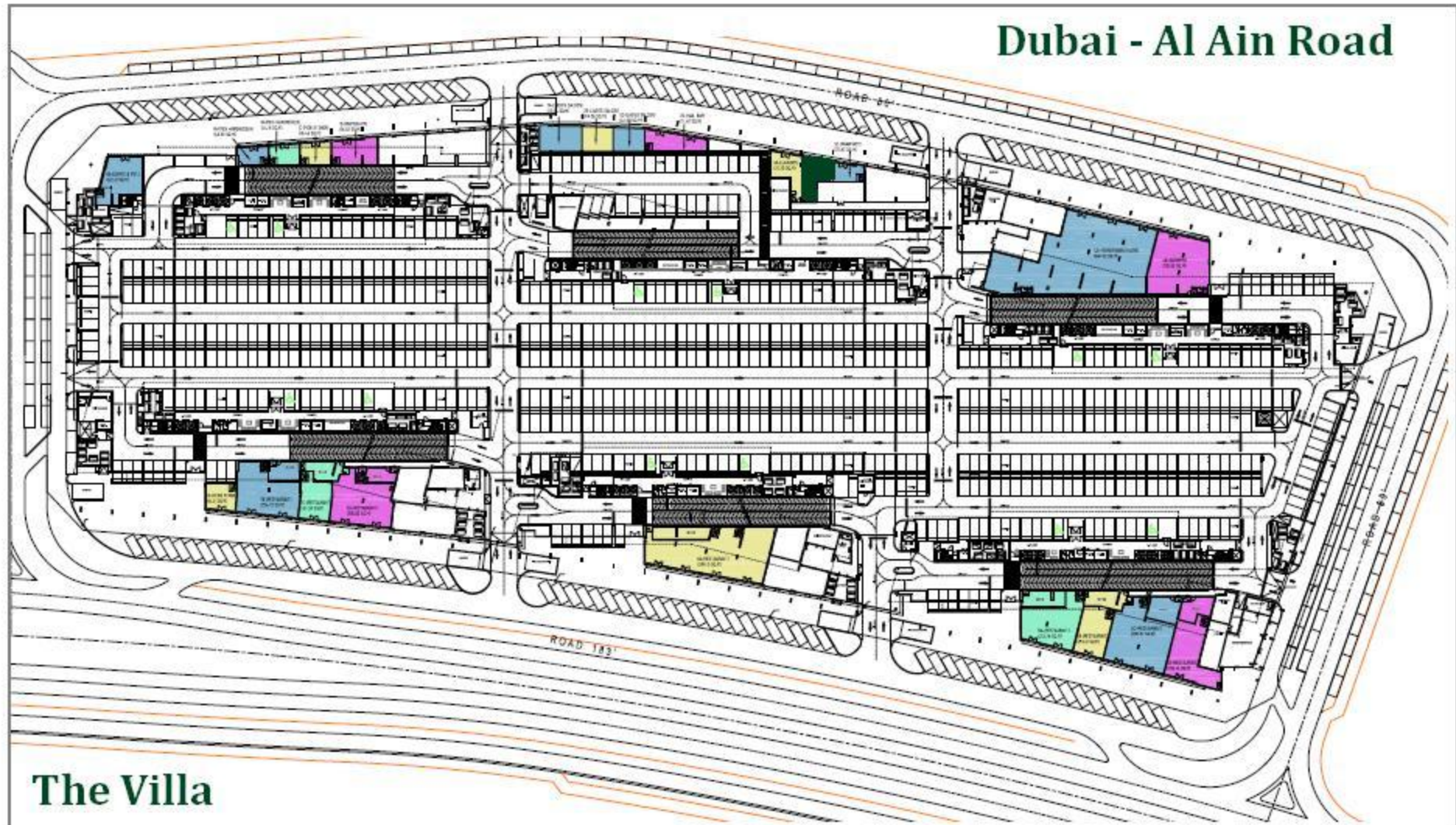
FLOORPLAN



FLOORPLAN, SUGGESTED AREAS



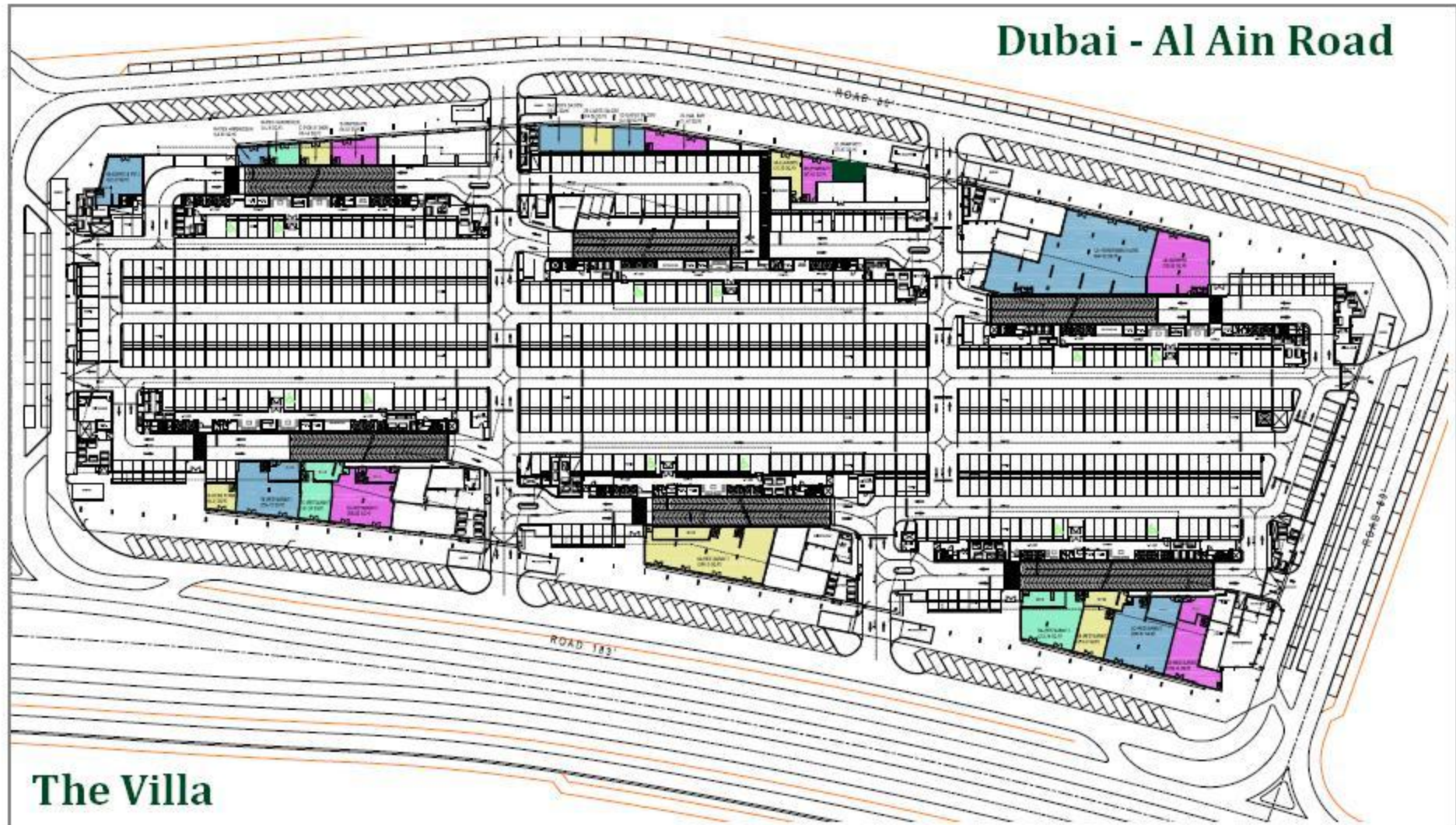
FLOORPLAN



FLOORPLAN, SUGGESTED AREAS



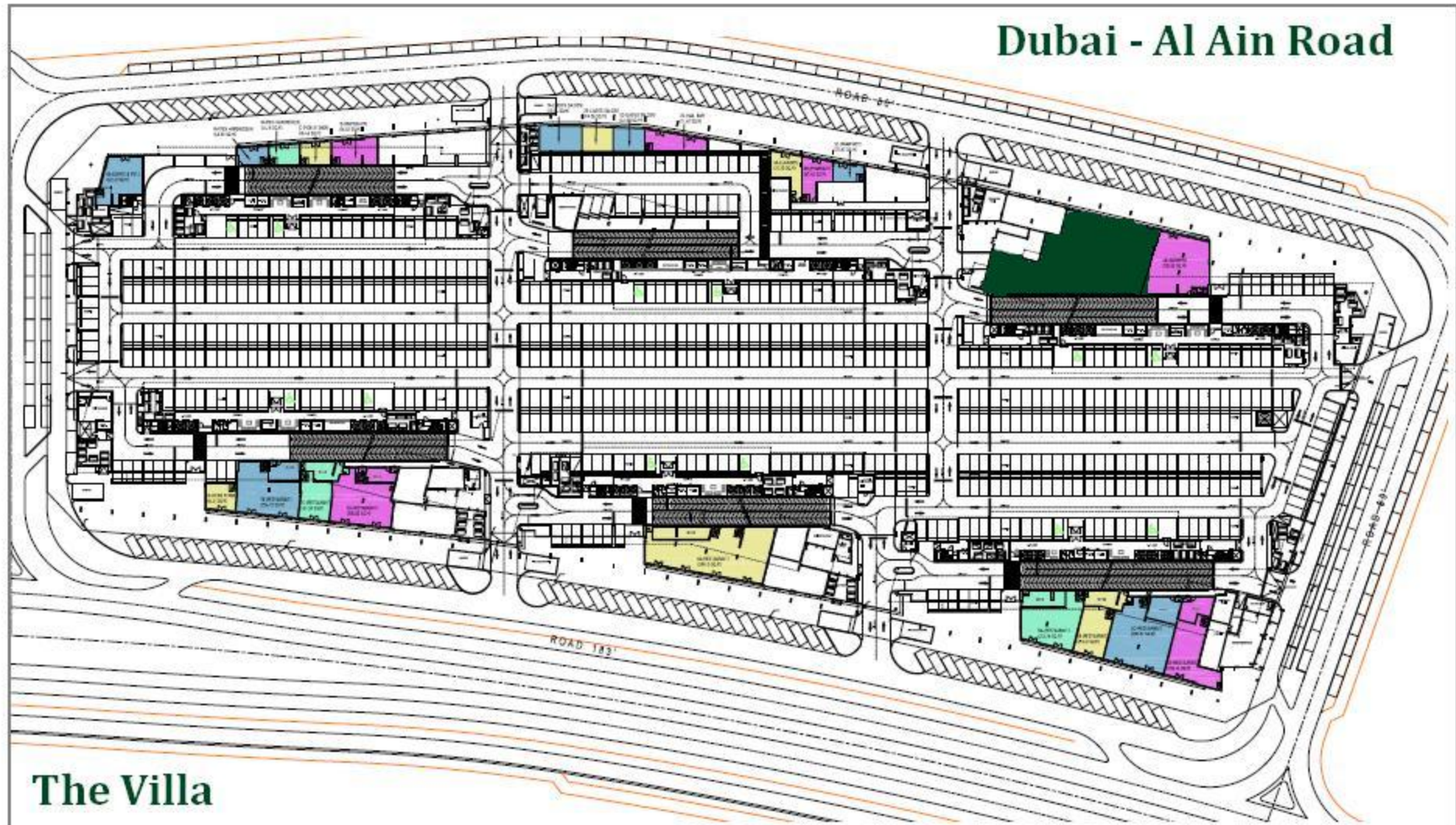
FLOORPLAN



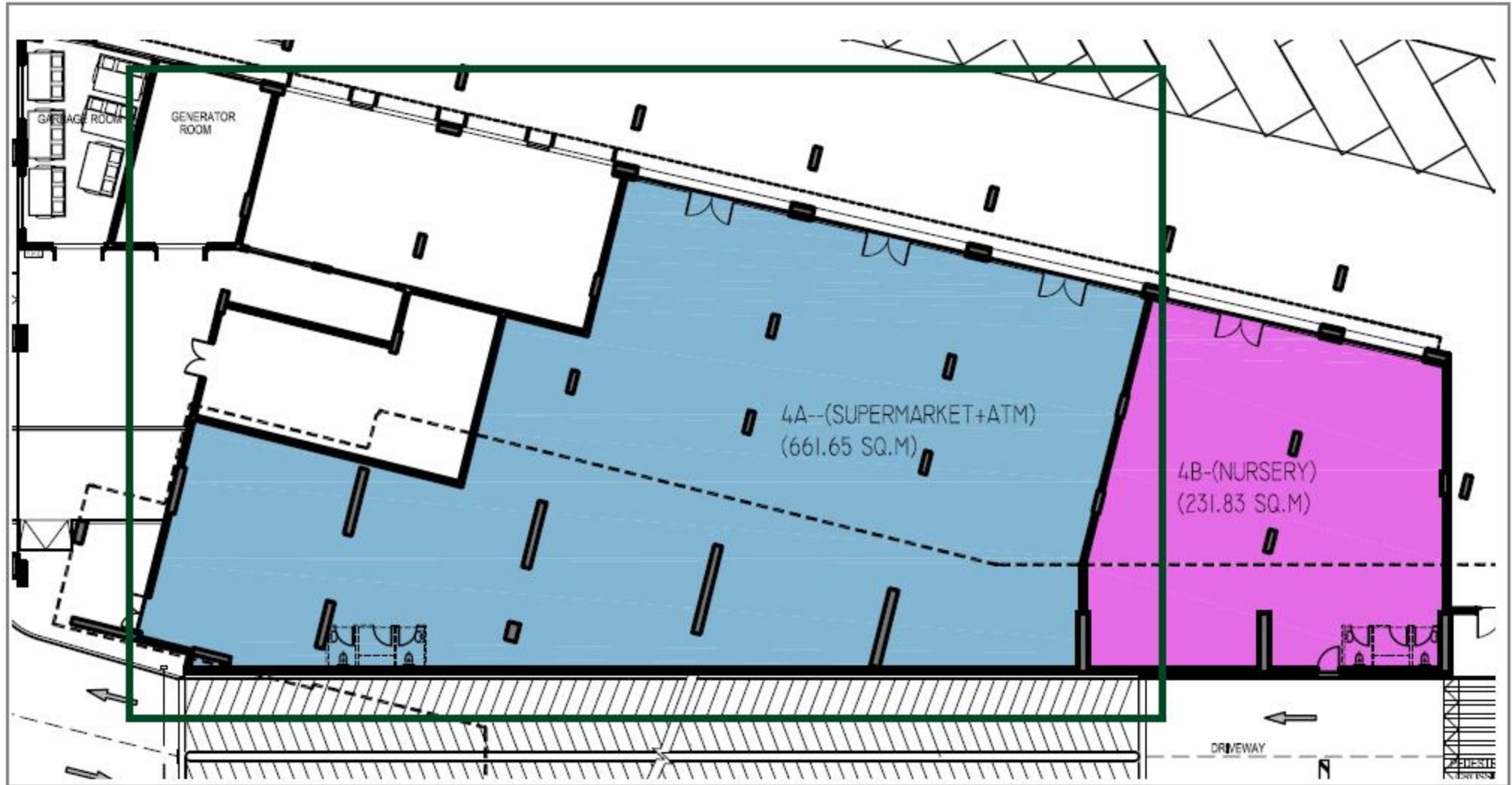
FLOORPLAN, SUGGESTED AREAS



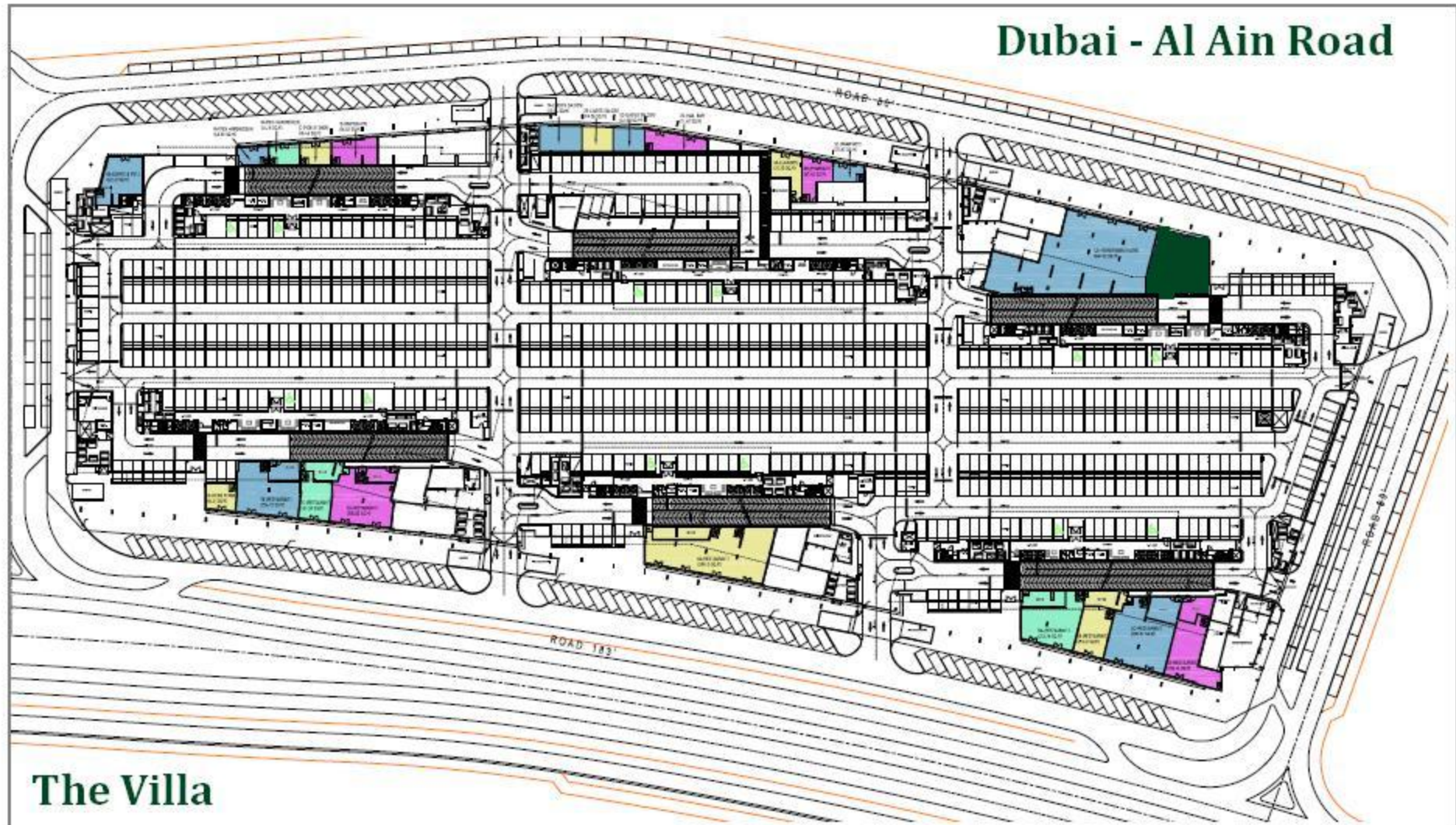
FLOORPLAN



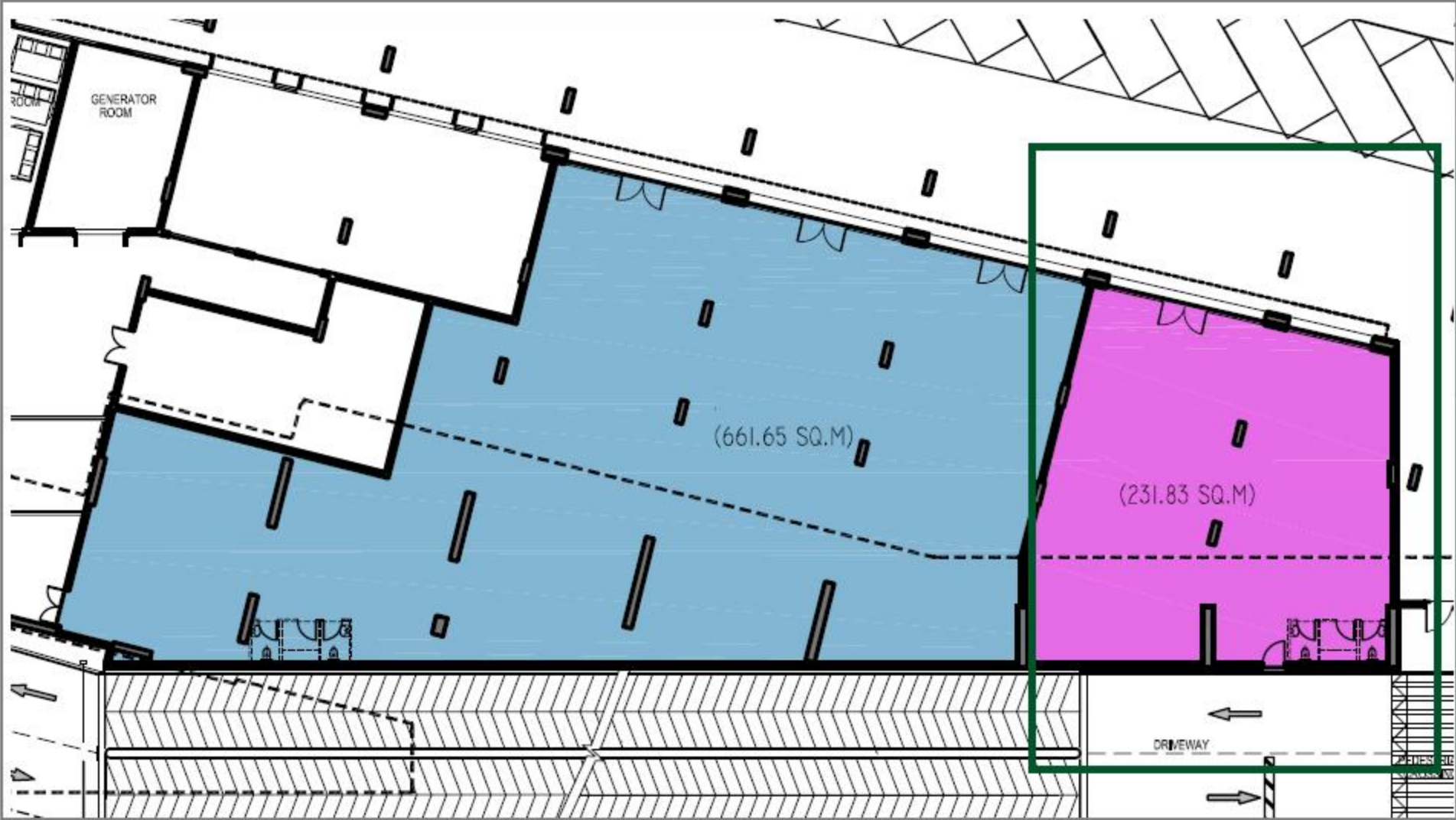
FLOORPLAN, SUGGESTED AREAS



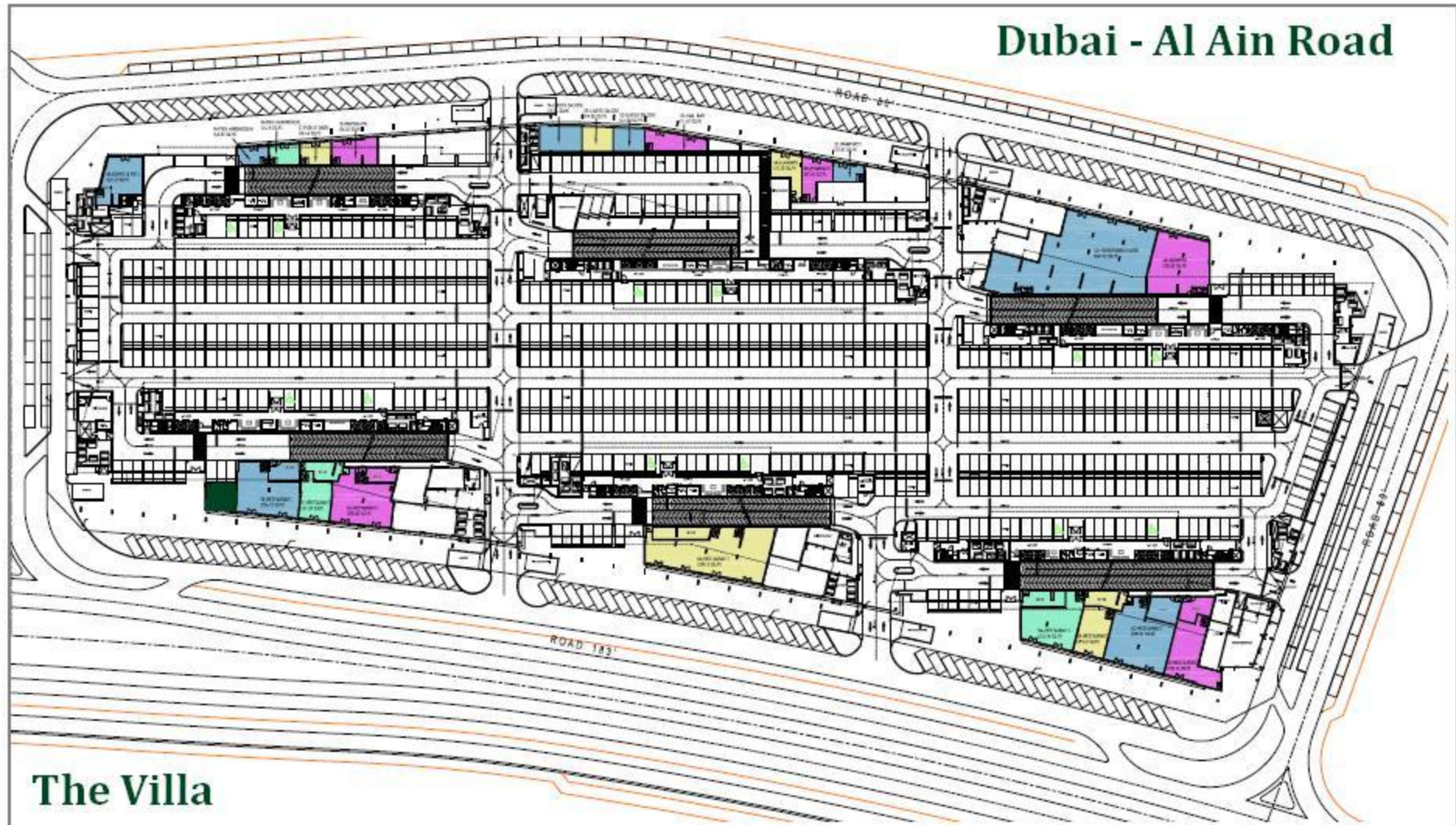
FLOORPLAN



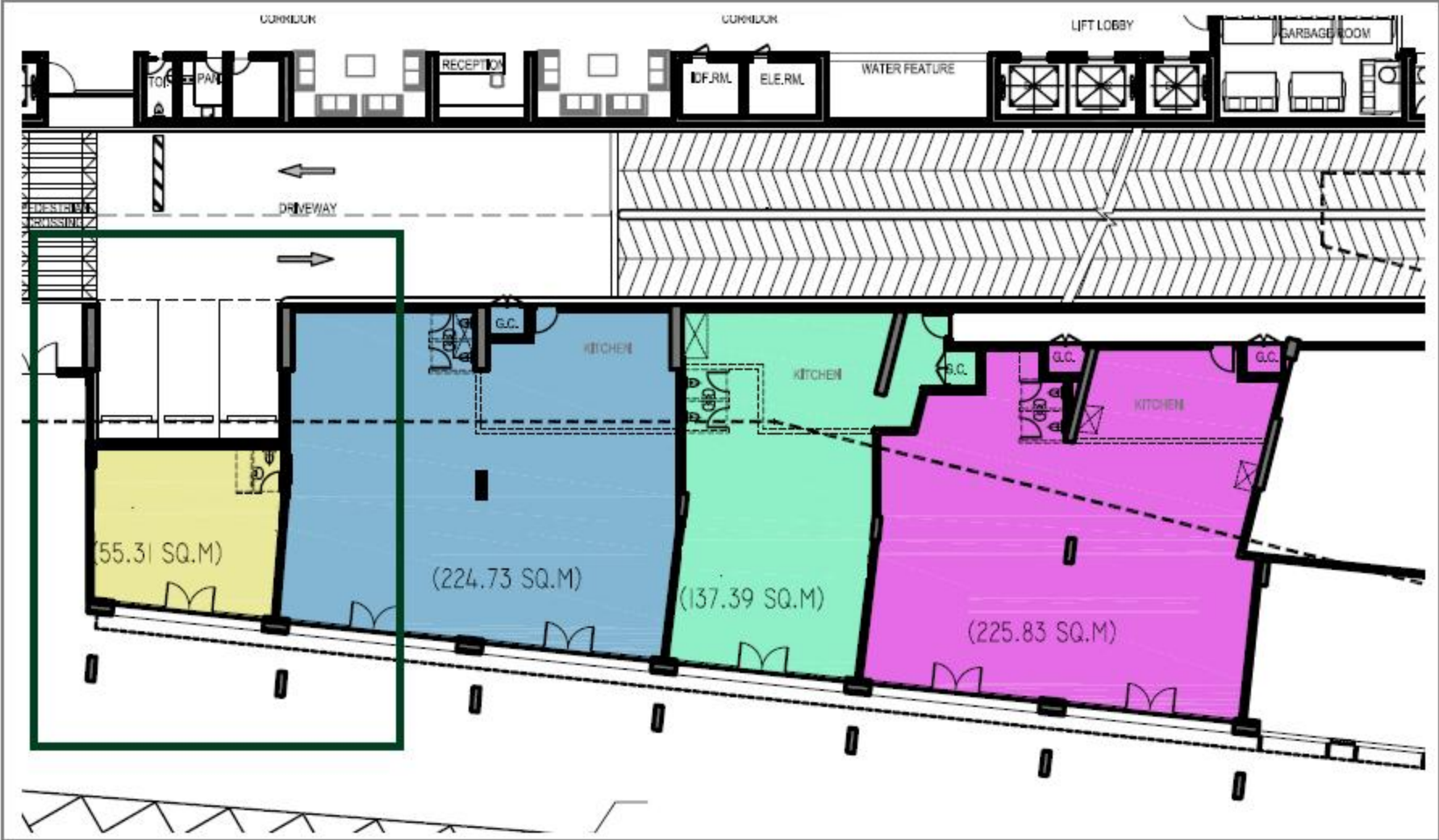
FLOORPLAN, SUGGESTED AREAS



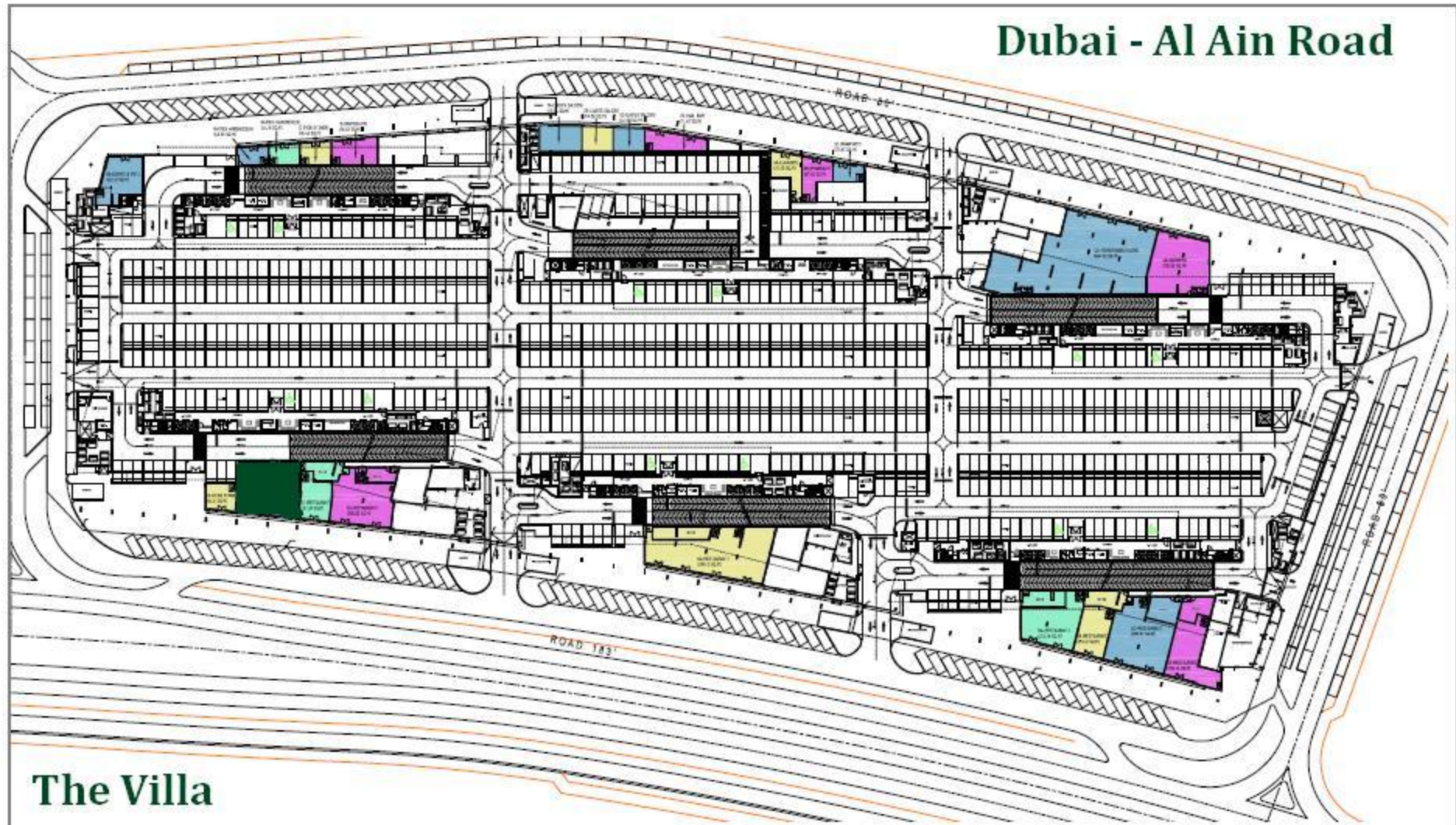
FLOORPLAN



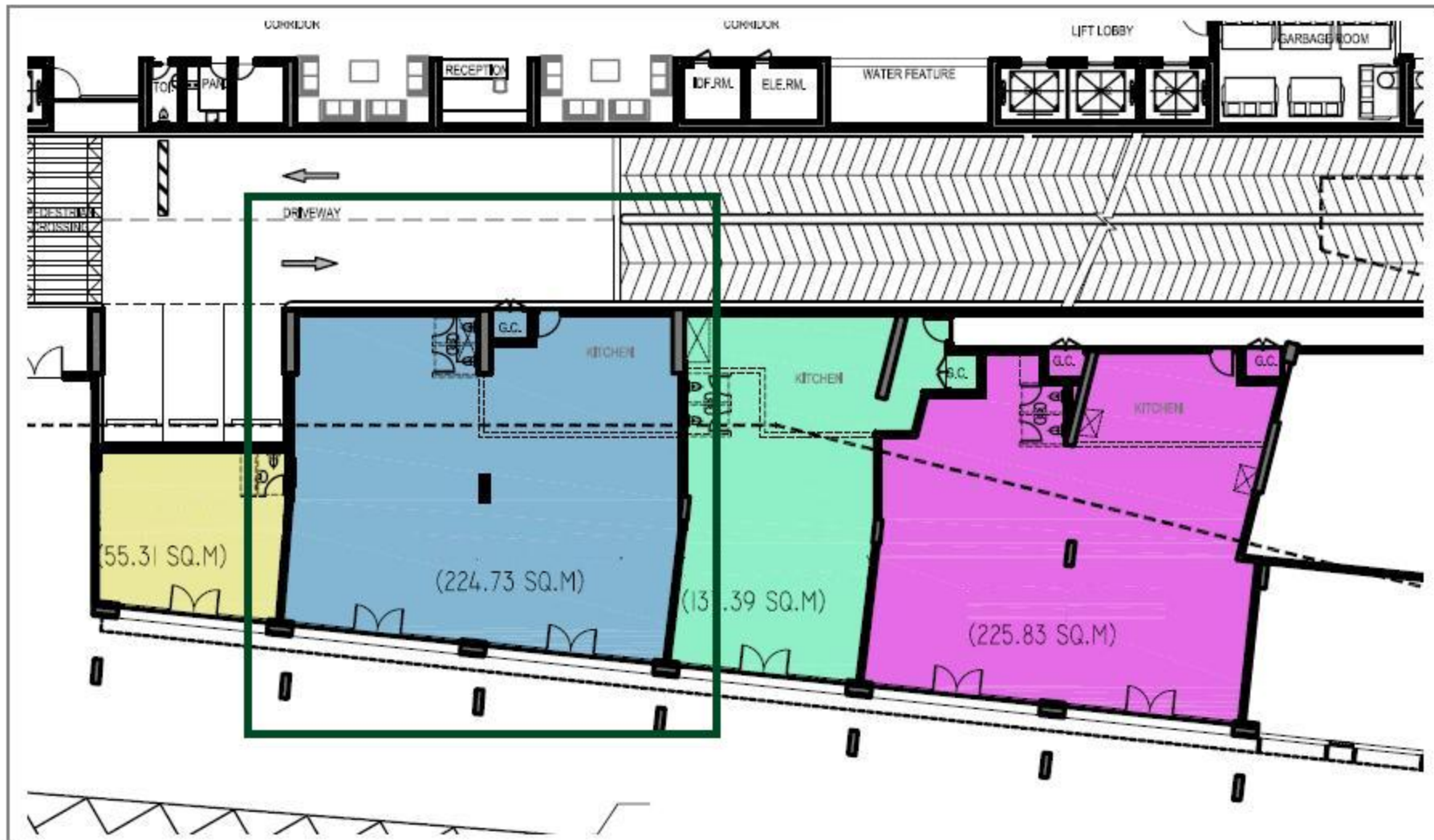
FLOORPLAN, SUGGESTED AREAS



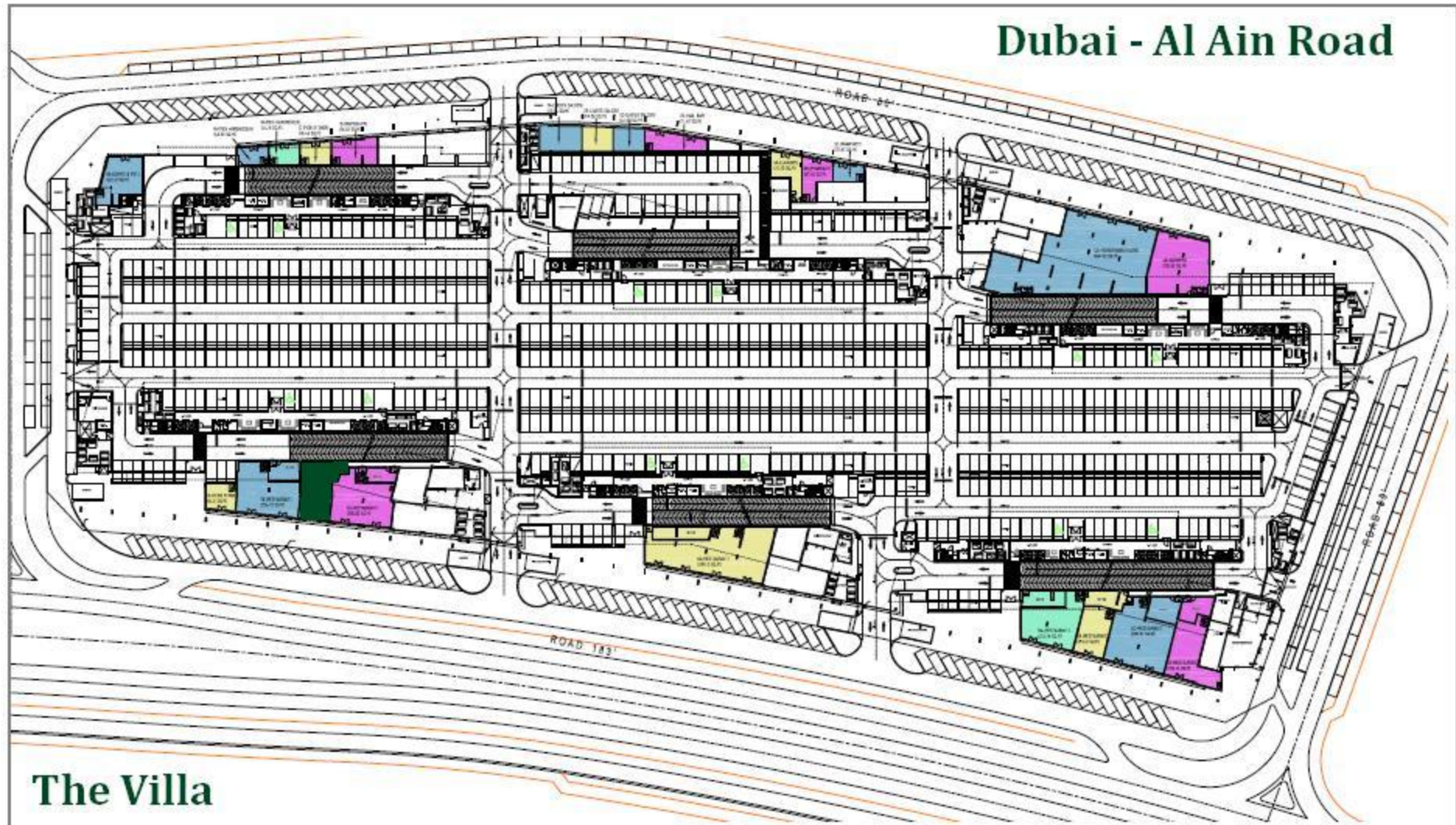
FLOORPLAN



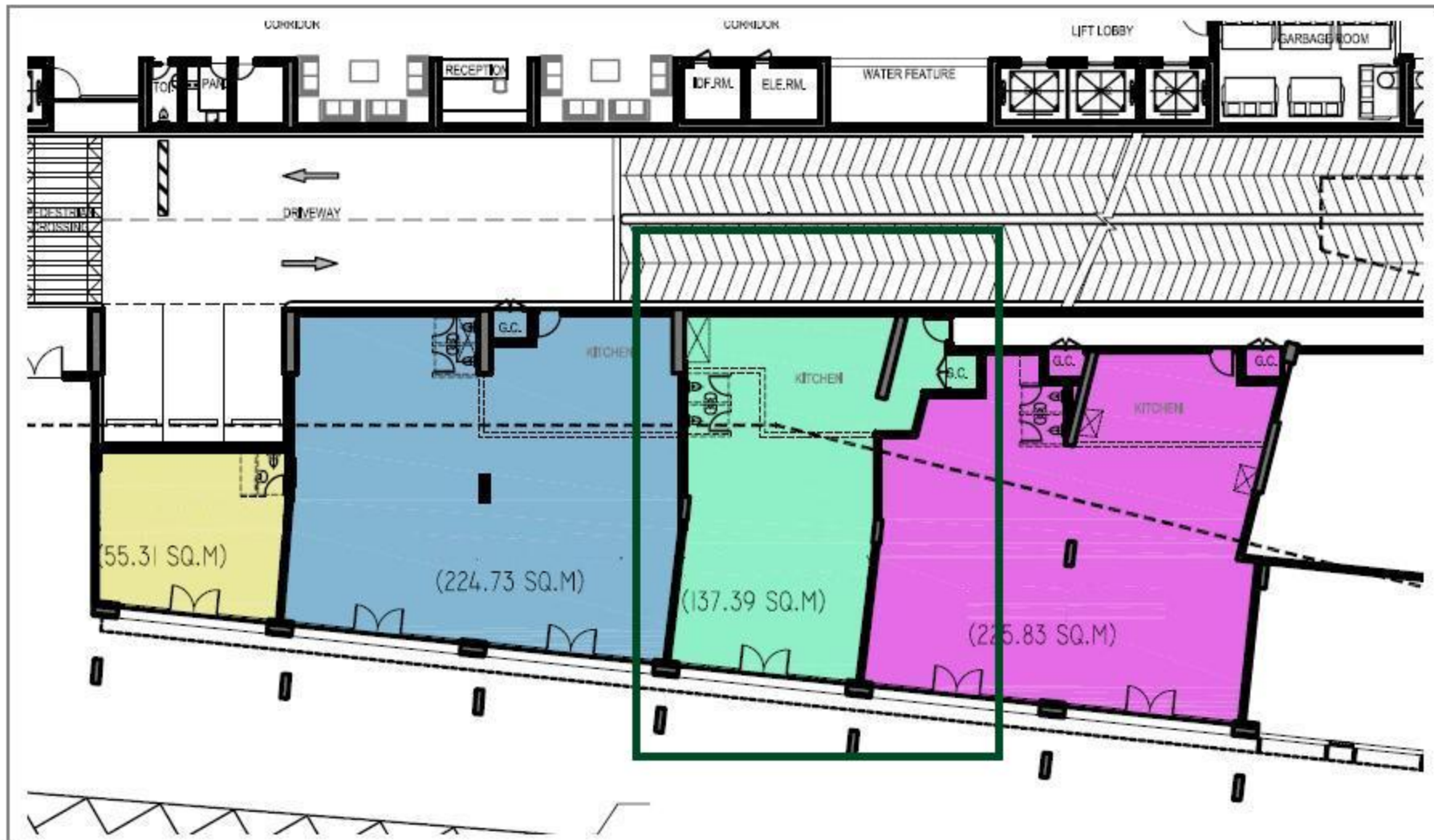
FLOORPLAN, SUGGESTED AREAS



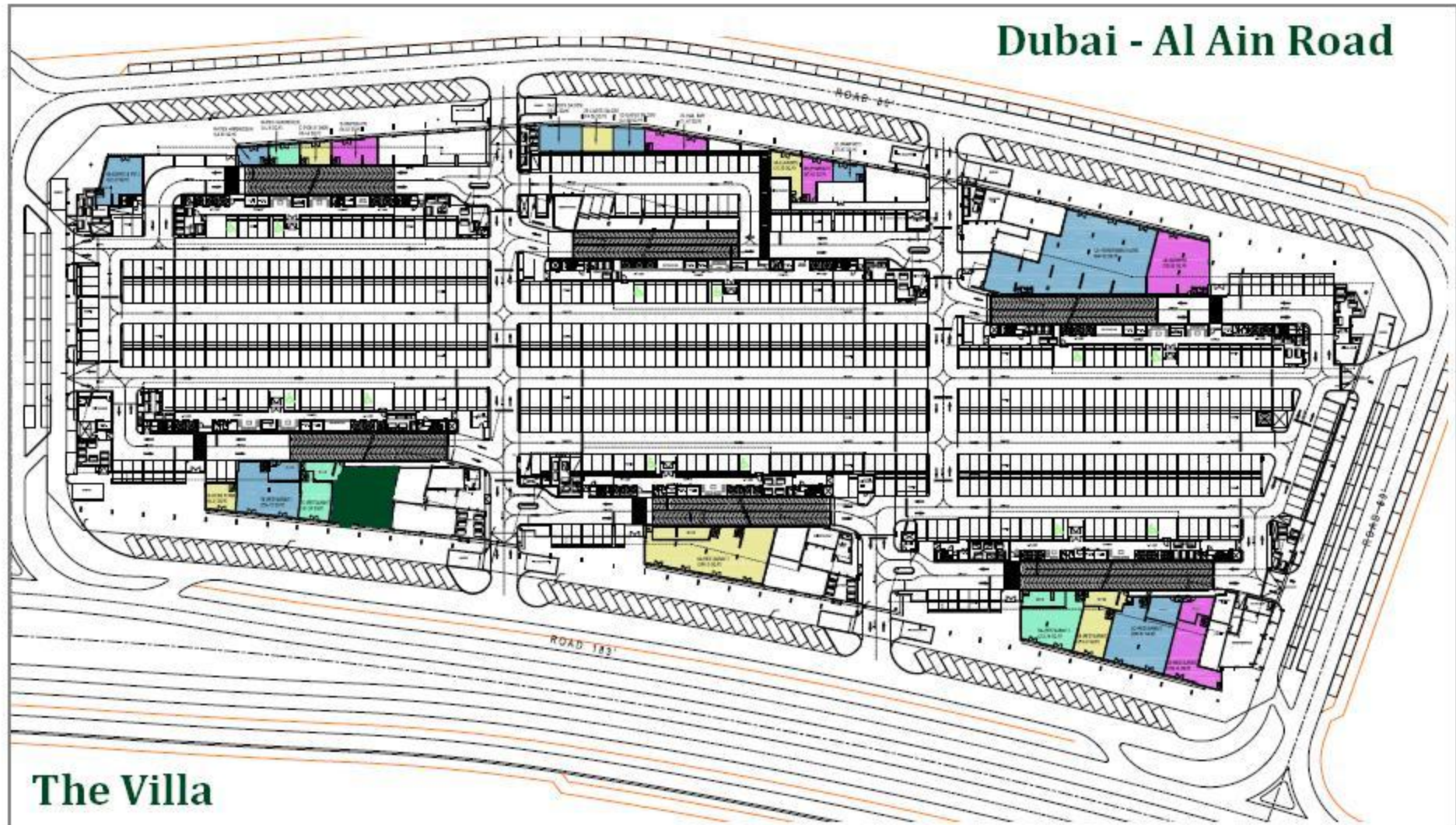
FLOORPLAN



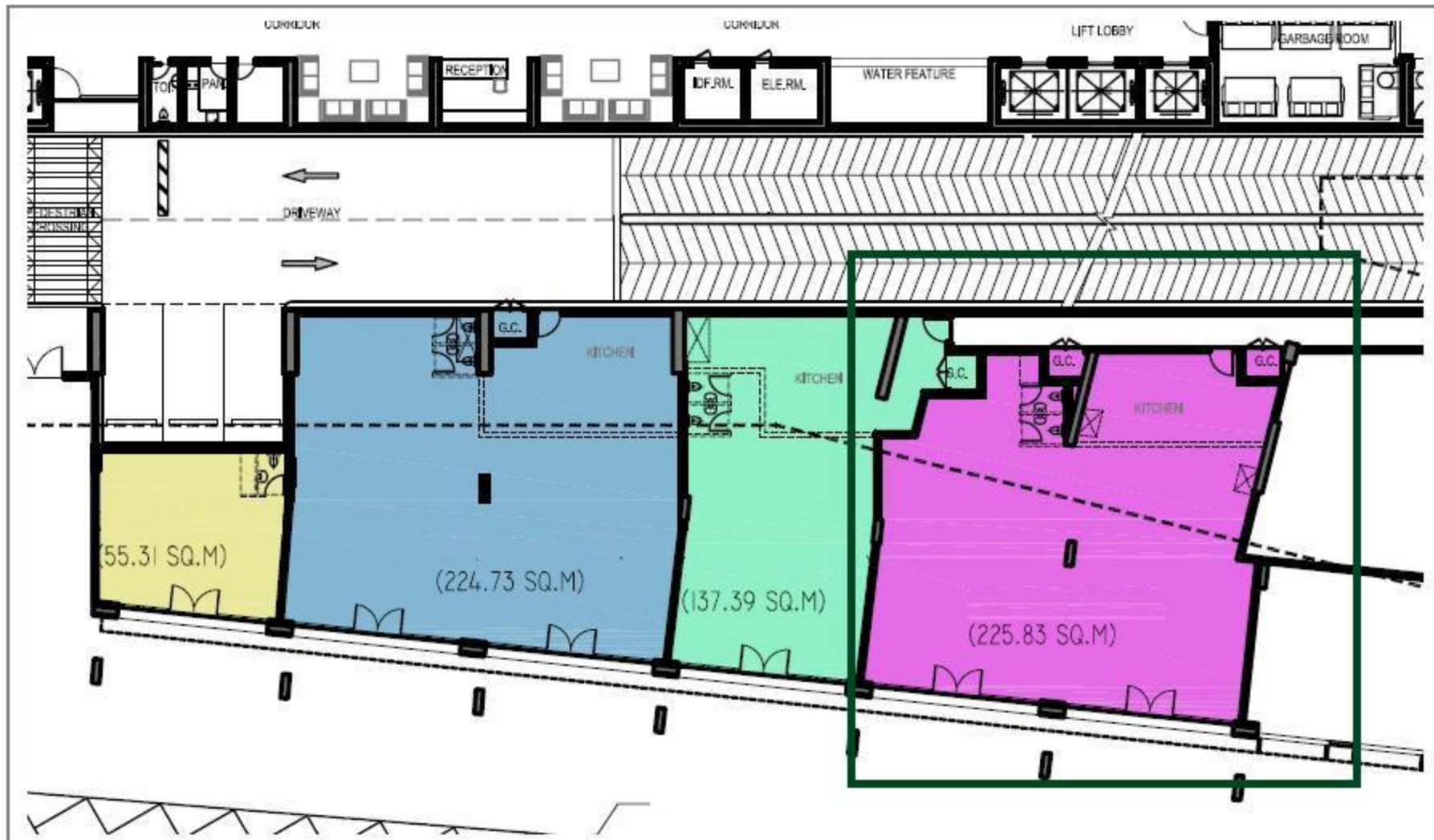
FLOORPLAN, SUGGESTED AREAS



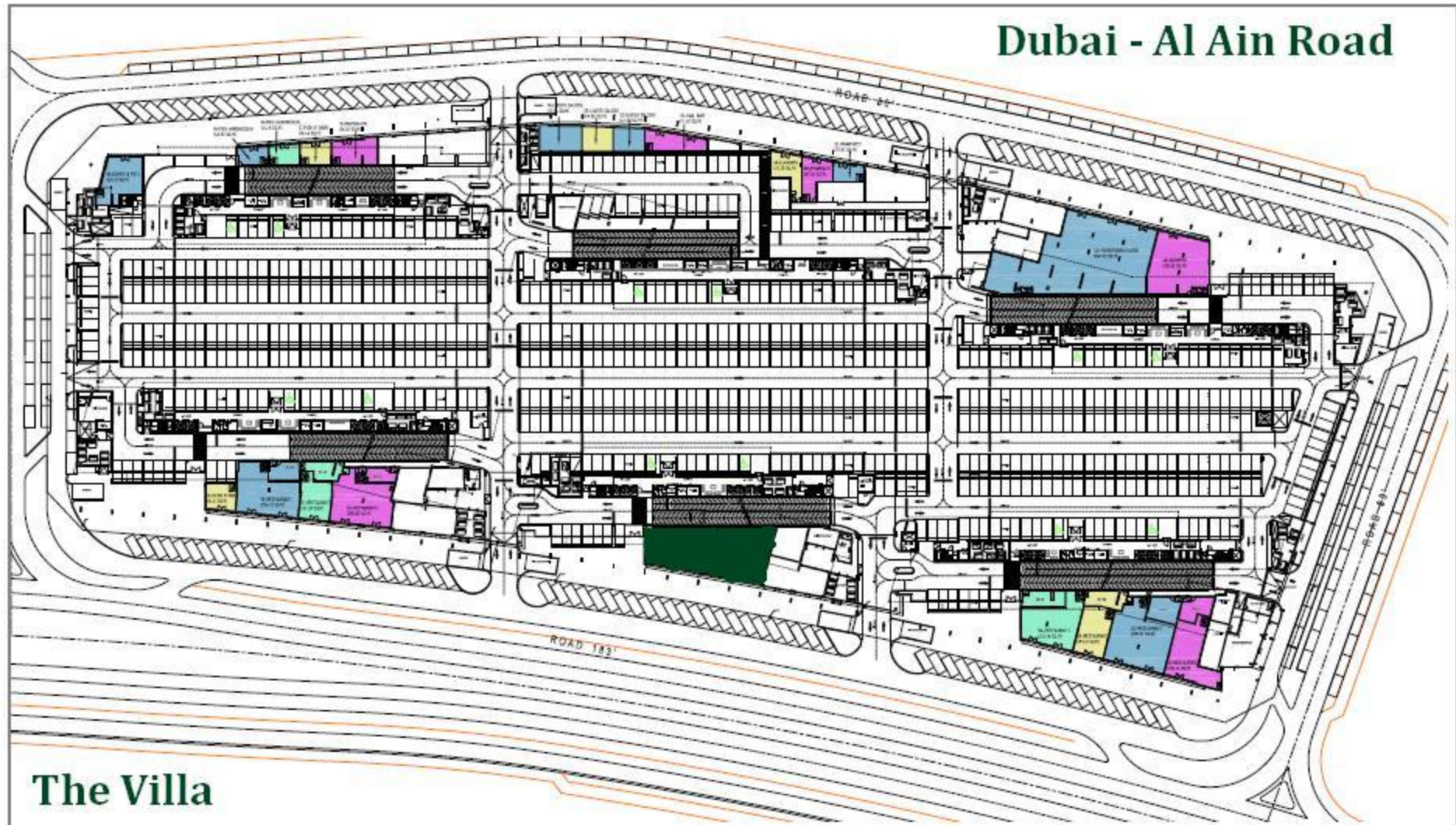
FLOORPLAN



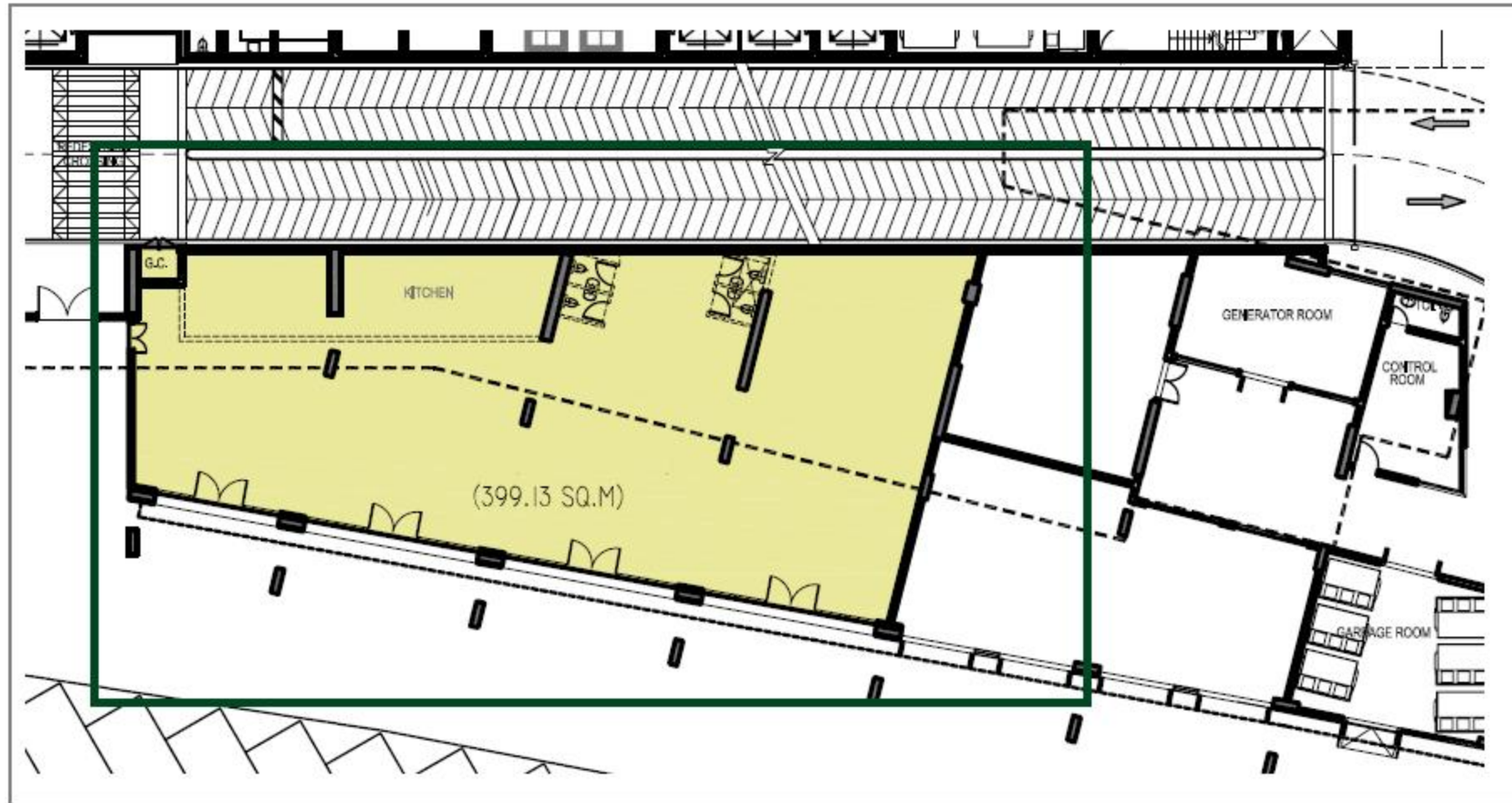
FLOORPLAN, SUGGESTED AREAS



FLOORPLAN



FLOORPLAN, SUGGESTED AREAS



SKYCOURTSUPDATE



TENANTPACKAGE

The Skycourts project team will support you with the following:

- Special price
- Special payment terms
- Staff accomodation
- Flexibility in design/space allocation
- Dedicated parking space
- Communication support
 - Press release announcing the retail tenant to over 80 communication channels
 - Announcement to owners of units in Skycourts (Email shot, SMS, Newsletter, Website)
 - Email shot to residents in the area
 - Announcement on the Skycourts website

THANKYOU

For more details, please contact the Skycourts project team:

Rosina Iosub

Sales Manager

T 04 325 1616

M 050 246 8656

E rosina@harbordubai.com